

## 35-1560: Polyclonal Antibody to EGFR (Ab-869)

<b>Clonality :</b>	Polyclonal
<b>Application :</b>	IHC, WB
<b>Reactivity :</b>	Rat, Mouse, Human
<b>Gene :</b>	EGFR
<b>Gene ID :</b>	1956
<b>Uniprot ID :</b>	P00533
<b>Format :</b>	Purified
<b>Alternative Name :</b>	Receptor tyrosine-protein kinase ErbB-1, ERBB1
<b>Isotype :</b>	Rabbit IgG
<b>Immunogen Information :</b>	Peptide sequence around aa.867~871 (K-E-Y-H-A) derived from Human EGFR.

### Description

Receptor for EGF, but also for other members of the EGF family, as TGF- $\alpha$ , amphiregulin, betacellulin, heparin-binding EGF-like growth factor, GP30 and vaccinia virus growth factor.

### Product Info

<b>Amount :</b>	50 $\mu$ l / 100 $\mu$ l
<b>Content :</b>	Supplied at 1.0mg/mL in phosphate buffered saline (without Mg <sup>2+</sup> and Ca <sup>2+</sup> ), pH 7.4, 150mM NaCl, 0.02% sodium azide and 50% glycerol.
<b>Storage condition :</b>	Store the antibody at 4°C, stable for 6 months. For long-term storage, store at -20°C. Avoid repeated freeze and thaw cycles.

### Application Note

Predicted MW: 175kd, Western blotting: 1:500~1:1000, Immunohistochemistry: 1:50~1:100

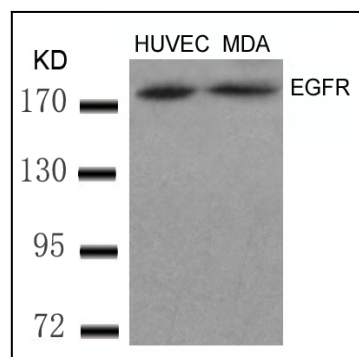


Figure 1: Western blot analysis of extracts from HUVEC and MDA cells using EGFR(Ab-869) Antibody 35-1560 .

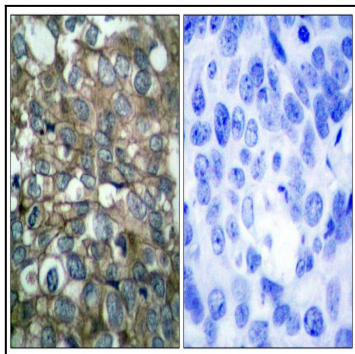


Figure 2: Immunohistochemical analysis of paraffin-embedded human breast carcinoma tissue using EGFR(Ab-869) Antibody 35-1560 (left) or the same antibody preincubated with blocking peptide(right).