

35-1561: Polyclonal Antibody to IRS-1 (Ab-636)

Clonality :	Polyclonal
Application :	IHC,WB,IF
Reactivity :	Rat,Mouse,Human
Gene :	IRS1
Gene ID :	3667
Uniprot ID :	P35568
Format :	Purified
Alternative Name :	IRS-1, IRS1
Isotype :	Rabbit IgG
Immunogen Information :	Peptide sequence around aa.634~638 (P-M-S-P-K) derived from Human IRS-1.

Description

May mediate the control of various cellular processes by insulin. When phosphorylated by the insulin receptor binds specifically to various cellular proteins containing SH2 domains such as phosphatidylinositol 3-kinase p85 subunit or GRB2. Activates phosphatidylinositol 3-kinase when bound to the regulatory p85 subunit

Product Info

Amount :	50 µl / 100 µl
Content :	Supplied at 1.0mg/mL in phosphate buffered saline (without Mg ²⁺ and Ca ²⁺), pH 7.4, 150mM NaCl, 0.02% sodium azide and 50% glycerol.
Storage condition :	Store the antibody at 4°C, stable for 6 months. For long-term storage, store at -20°C. Avoid repeated freeze and thaw cycles.

Application Note

Predicted MW: 180kd, Western blotting: 1:500~1:1000, Immunohistochemistry: 1:50~1:100, Immunofluorescence: 1:100~1:200

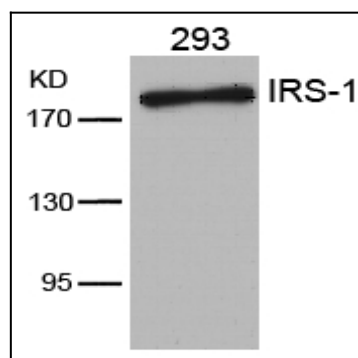


Figure 1: Western blot analysis of extracts from 293 cells using IRS-1(Ab-636) Antibody 35-1561 .

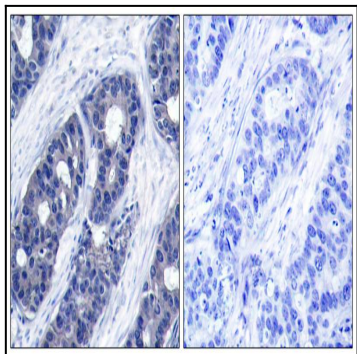


Figure 2: Immunohistochemical analysis of paraffin-embedded human breast carcinoma tissue using IRS-1(Ab-636) Antibody 35-1561 (left) or the same antibody preincubated with blocking peptide(right).

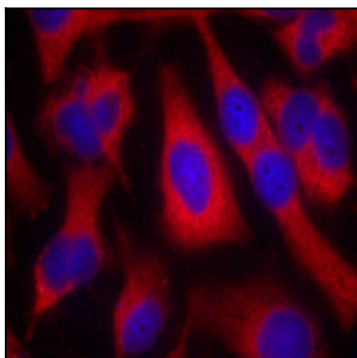


Figure 3: Immunofluorescence staining of methanol-fixed HeLa cells using IRS-1(Ab-636) Antibody 35-1561 .