

35-1563: Polyclonal Antibody to S6 Ribosomal Protein (Ab-235)

Clonality :	Polyclonal
Application :	WB,IHC,IF
Reactivity :	Human,Mouse,Rat
Gene :	RPS6
Gene ID :	6194
Uniprot ID :	P62753
Format :	Purified
Alternative Name :	NP33, RPS6, RS6
Isotype :	Rabbit IgG
Immunogen Information :	Peptide sequence around aa. 233~237 (R-L-S-S-L) derived from Human S6 Ribosomal Protein.

Description

May play an important role in controlling cell growth and proliferation through the selective translation of particular classes of mRNA.

Product Info

Amount :	50 µl / 100 µl
Content :	Supplied at 1.0mg/mL in phosphate buffered saline (without Mg ²⁺ and Ca ²⁺), pH 7.4, 150mM NaCl, 0.02% sodium azide and 50% glycerol.
Storage condition :	Store the antibody at 4°C, stable for 6 months. For long-term storage, store at -20°C. Avoid repeated freeze and thaw cycles.

Application Note

Predicted MW: 32kd, Western blotting: 1:500~1:1000, Immunohistochemistry: 1:50~1:100, Immunofluorescence: 1:100~1:200

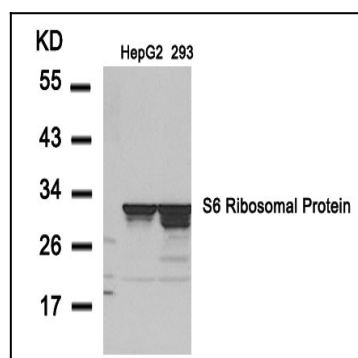


Figure 1: Western blot analysis of extracts from HepG2 and 293 cells using S6 Ribosomal Protein(Ab-235) Antibody 35-1563 .

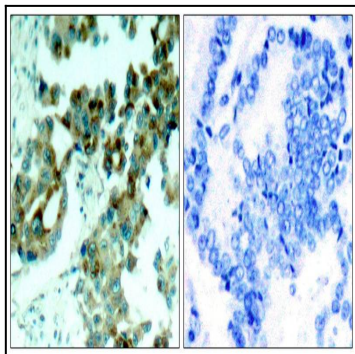


Figure 2: Immunohistochemical analysis of paraffin- embedded human lung carcinoma tissue using S6 Ribosomal Protein(Ab-235) Antibody 35-1563 (left) or the same antibody preincubated with blocking peptide(right).

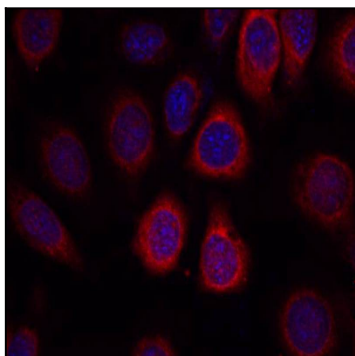


Figure 3: Immunofluorescence staining of methanol-fixed MCF7 cells using S6 Ribosomal Protein(Ab-235) Antibody 35-1563 .