

35-1577: Polyclonal Antibody to NFkB-p105/p50 (Ab-932)

| | |
|--------------------------------|--|
| Clonality : | Polyclonal |
| Application : | WB,IHC |
| Reactivity : | Human,Mouse,Rat |
| Gene : | NF-kB1 |
| Gene ID : | 4790 |
| Uniprot ID : | P19838 |
| Format : | Purified |
| Alternative Name : | DNA-binding factor KBF1, EBP-1, NF-kappa-B1 p84/NF-kappa-B1 p98, NFKB1, NFkB-p50 |
| Isotype : | Rabbit IgG |
| Immunogen Information : | Peptide sequence around aa.930~934 (E-T-S-F-R) derived from Human NFkB-p105. |

Description

NF-kappa-B is a pleiotropic transcription factor which is present in almost all cell types and is involved in many biological processes such as inflammation, immunity, differentiation, cell growth, tumorigenesis and apoptosis. NF-kappa-B is a homo- or heterodimeric complex formed by the Rel-like domain-containing proteins RELA/p65, RELB, NFKB1/p105, NFKB1/p50, REL and NFKB2/p52. The dimers bind at kappa-B sites in the DNA of their target genes and the individual dimers have distinct preferences for different kappa-B sites that they can bind with distinguishable affinity and specificity. Different dimer combinations act as transcriptional activators or repressors, respectively. Soren Beinke et al. (2004) Biochem J. 382(Pt 2): 393

Product Info

| | |
|----------------------------|--|
| Amount : | 50 µl / 100 µl |
| Content : | Supplied at 1.0mg/mL in phosphate buffered saline (without Mg ²⁺ and Ca ²⁺), pH 7.4, 150mM NaCl, 0.02% sodium azide and 50% glycerol. |
| Storage condition : | Store the antibody at 4°C, stable for 6 months. For long-term storage, store at -20°C. Avoid repeated freeze and thaw cycles. |

Application Note

Predicted MW: 120 kd, Western blotting: 1:500~1:1000, Immunohistochemistry: 1:50~1:100

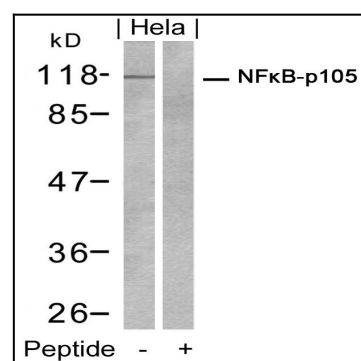


Figure 1: Western blot analysis of extracts from HeLa cells using NFkB-p105 (Ab-932) Antibody 35-1577 and the same antibody preincubated with blocking peptide.

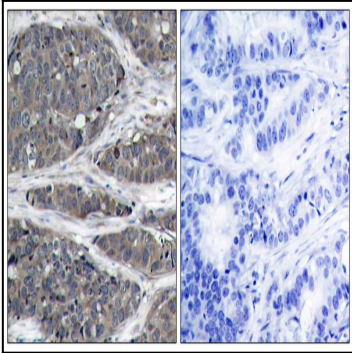


Figure 2: Immunohistochemical analysis of paraffin-embedded human breast carcinoma tissue using NFkB-p105(Ab-932) Antibody 35-1577 (left) or the same antibody preincubated with blocking peptide(right).