

35-1601: Polyclonal Antibody to p56Dok-2 (Ab-299)

Clonality :	Polyclonal
Application :	WB,IHC,IF
Reactivity :	Human
Gene :	DOK2
Gene ID :	9046
Uniprot ID :	O60496
Format :	Purified
Alternative Name :	DOK2
Isotype :	Rabbit IgG
Immunogen Information :	Peptide sequence around aa.297~301 (G-E-Y-A-V) derived from Human p56Dok-2.

Description

DOK proteins are enzymatically inert adaptor or scaffolding proteins. They provide a docking platform for the assembly of multimolecular signaling complexes. DOK2 may modulate the cellular proliferation induced by IL-4, as well as IL-2 and IL-3. May be involved in modulating Bcr-Abl signaling. Attenuates EGF-stimulated MAP kinase activation

Product Info

Amount :	50 µl / 100 µl
Content :	Supplied at 1.0mg/mL in phosphate buffered saline (without Mg2+ and Ca2+), pH 7.4, 150mM NaCl, 0.02% sodium azide and 50% glycerol.
Storage condition :	Store the antibody at 4°C, stable for 6 months. For long-term storage, store at -20°C. Avoid repeated freeze and thaw cycles.

Application Note

Predicted MW: 56kd, Western blotting: 1:500~1:1000, Immunohistochemistry: 1:50~1:100, Immunofluorescence: 1:100~1:200

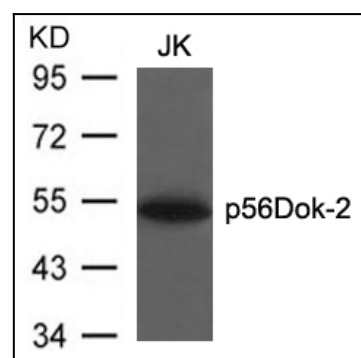


Figure 1: Western blot analysis of extracts from JK cells using p56Dok-2(Ab-299) Antibody 35-1601 .

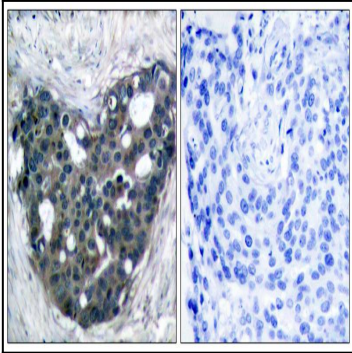


Figure 2: Immunohistochemical analysis of paraffin-embedded human breast carcinoma tissue using p56Dok-2(Ab-299) Antibody 35-1601 (left) or the same antibody preincubated with blocking peptide(right).

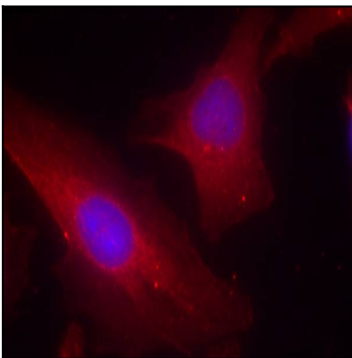


Figure 3: Immunofluorescence staining of methanol-fixed HeLa cells using p56Dok-2(Ab-299) Antibody 35-1601 .