

35-1605: Polyclonal Antibody to Integrin beta3 (Ab-785)

Clonality :	Polyclonal
Application :	WB
Reactivity :	Human,Mouse,Rat
Gene :	ITGB3
Gene ID :	3690
Uniprot ID :	P05106
Format :	Purified
Alternative Name :	CD61 antigen, GP3A, GPIIIa, ITB3, Platelet membrane glycoprotein IIIa
Isotype :	Rabbit IgG
Immunogen Information :	Peptide sequence around aa.783~787 (I-T-Y-R-G) derived from Human Integrin B3/ITGB3.

Description

The Itg-Beta3 gene encodes the beta subunit of the platelet membrane adhesive protein receptor complex Itg-Beta3 protein, which belongs to the Integrin class of cell adhesion molecule receptors that share a common heterotrimeric structure with α and Beta subunits. It is a common Beta subunit of the platelet complex and of two other Integrins (Fibronectin and Vitronectin Receptors), which have distinct α subunits. Itg-Beta3 has been implicated in a wide variety of functions, including platelet aggregation and thrombosis and implantation, placentation, angiogenesis, bone remodeling, and tumor progression. Glanzmann Thrombasthenia can result from defects in the genes for either the Itg- α 2B or the Itg-Beta3 subunit Sujoy Bhattacharya, et al. (2006) Biochem J. August 1; 397(Pt 3): 437

Product Info

Amount :	50 μ l / 100 μ l
Content :	Supplied at 1.0mg/mL in phosphate buffered saline (without Mg ²⁺ and Ca ²⁺), pH 7.4, 150mM NaCl, 0.02% sodium azide and 50% glycerol.
Storage condition :	Store the antibody at 4°C, stable for 6 months. For long-term storage, store at -20°C. Avoid repeated freeze and thaw cycles.

Application Note

Predicted MW: 110kd, Western blotting: 1:500~1:1000

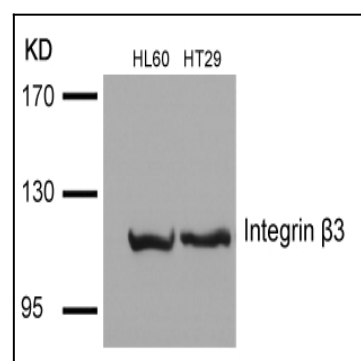


Figure 1: Western blot analysis of extracts from HL60 and HT29 cells using Integrin β 3(Ab-785) Antibody 35-1605 .