

### 35-1610: Polyclonal Antibody to BIM (Ab-69)

<b>Clonality :</b>	Polyclonal
<b>Application :</b>	WB,IHC
<b>Reactivity :</b>	Human,Mouse,Rat
<b>Gene :</b>	BCL2L11
<b>Gene ID :</b>	10018
<b>Uniprot ID :</b>	O43521
<b>Format :</b>	Purified
<b>Alternative Name :</b>	BCL2-like protein 11, BCL2L11, BOD, Bcl-2 related ovarian death protein
<b>Isotype :</b>	Rabbit IgG
<b>Immunogen Information :</b>	Peptide sequence around aa.67~71 (P-A-S-P-G) derived from Human BIM.

#### Description

Induces apoptosis. Isoform BimL is more potent than isoform BimEL. Isoform Bim-a1, isoform Bim-a2 and isoform Bim-a3 induce apoptosis, although less potent than the isoforms BimEL, BimL and BimS. Isoform Bim-gamma induces apoptosis.

#### Product Info

<b>Amount :</b>	50 µl / 100 µl
<b>Content :</b>	Supplied at 1.0mg/mL in phosphate buffered saline (without Mg <sup>2+</sup> and Ca <sup>2+</sup> ), pH 7.4, 150mM NaCl, 0.02% sodium azide and 50% glycerol.
<b>Storage condition :</b>	Store the antibody at 4°C, stable for 6 months. For long-term storage, store at -20°C. Avoid repeated freeze and thaw cycles.

#### Application Note

Predicted MW: 23kd, Western blotting: 1:500~1:1000, Immunohistochemistry: 1:50~1:100

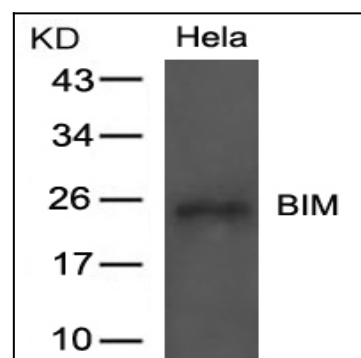


Figure 1: Western blot analysis of extracts from HeLa cells using BIM(Ab-69) Antibody 35-1610 .

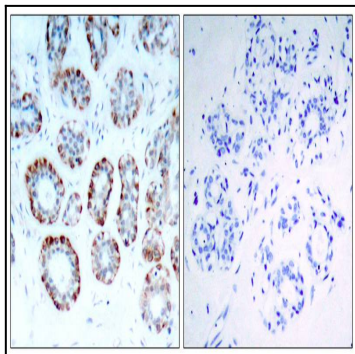


Figure 2: Immunohistochemical analysis of paraffin-embedded human breast carcinoma tissue using BIM(Ab-69) Antibody 35-1610 (left) or the same antibody preincubated with blocking peptide(right).