

## 35-1614: Polyclonal Antibody to GluR2 (Ab-880)

<b>Clonality :</b>	Polyclonal
<b>Application :</b>	WB
<b>Reactivity :</b>	Rat,Mouse,Human
<b>Gene :</b>	GRIA2
<b>Gene ID :</b>	2891
<b>Uniprot ID :</b>	P42262
<b>Format :</b>	Purified
<b>Alternative Name :</b>	GRIA2, GluR-2, GluR-B, GluR-K2, AMPA 2
<b>Isotype :</b>	Rabbit IgG
<b>Immunogen Information :</b>	Peptide sequence around aa.878~882 (I-E-S-V-K) derived from Human Glutamate receptor 2.

### Description

Ionotropic glutamate receptor. L-glutamate acts as an excitatory neurotransmitter at many synapses in the central nervous system. Binding of the excitatory neurotransmitter L-glutamate induces a conformation change, leading to the opening of the cation channel, and thereby converts the chemical signal to an electrical impulse. The receptor then desensitizes rapidly and enters a transient inactive state, characterized by the presence of bound agonist. Cull-Candy, S. et al. (2006) Curr. Opin. Neurobiol. 16, 288-297. Hanley JG, et al. (2002) Neuron. 34(1): 53-67

### Product Info

<b>Amount :</b>	50 µl / 100 µl
<b>Content :</b>	Supplied at 1.0mg/mL in phosphate buffered saline (without Mg <sup>2+</sup> and Ca <sup>2+</sup> ), pH 7.4, 150mM NaCl, 0.02% sodium azide and 50% glycerol.
<b>Storage condition :</b>	Store the antibody at 4°C, stable for 6 months. For long-term storage, store at -20°C. Avoid repeated freeze and thaw cycles.

### Application Note

Predicted MW: 100kd, Western blotting: 1:500~1:1000

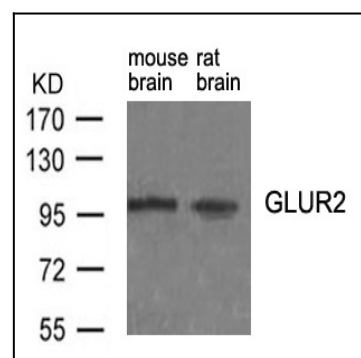


Figure 1: Western blot analysis of extracts from mouse brain and rat brain tissue using GluR2 (Ab-880) Antibody 35-1614 .