

35-1618: Polyclonal Antibody to PKC Delta (Ab-645)

Clonality :	Polyclonal
Application :	WB,IHC,IF
Reactivity :	Human
Gene :	PRKCD
Gene ID :	5580
Uniprot ID :	Q05655
Format :	Purified
Alternative Name :	nPKC-delta
Isotype :	Rabbit IgG
Immunogen Information :	Peptide sequence around aa. 643~647 (R-L-S-Y-S) derived from Human PKCd.

Description

This is calcium-independent, phospholipid-dependent, serine- and threonine-specific enzyme. PKC is activated by diacylglycerol, which in turn phosphorylates a range of cellular proteins. PKC also serves as the receptor for phorbol esters, a class of tumor promoters. May play a role in antigen-dependent control of B-cell function. Phosphorylates MUC1 in the C-terminal and regulates the interaction between MUC1 and beta-catenin.

Product Info

Amount :	50 µl / 100 µl
Content :	Supplied at 1.0mg/mL in phosphate buffered saline (without Mg ²⁺ and Ca ²⁺), pH 7.4, 150mM NaCl, 0.02% sodium azide and 50% glycerol.
Storage condition :	Store the antibody at 4°C, stable for 6 months. For long-term storage, store at -20°C. Avoid repeated freeze and thaw cycles.

Application Note

Predicted MW: 78kd, Western blotting: 1:500~1:1000, Immunohistochemistry: 1:50~1:100, Immunofluorescence: 1:100~1:200

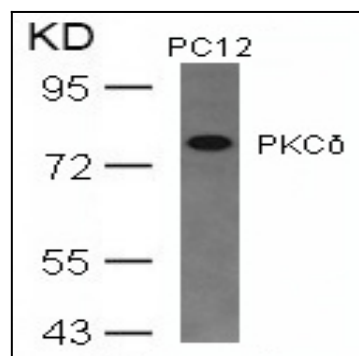


Figure 1: Western blot analysis of extracts from PC12 cells using PKCδ(Ab-645) Antibody 35-1618 .

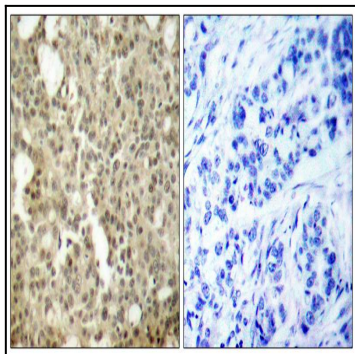


Figure 2: Immunohistochemical analysis of paraffin-embedded human breast carcinoma tissue using PKCd(Ab-645) Antibody 35-1618 (left) or the same antibody preincubated with blocking peptide(right).

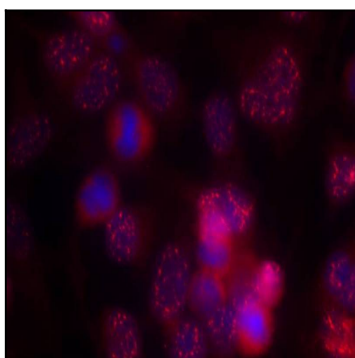


Figure 3: Immunofluorescence staining of methanol-fixed HeLa cells using PKCd(Ab-645) Antibody 35-1618 .