

### 35-1632: Polyclonal Antibody to Keratin 8 (Ab-74)

|                                |  |
|--------------------------------|--|
| <b>Clonality :</b>             | Polyclonal   |
| <b>Application :</b>           | WB,IHC,IF  |
| <b>Reactivity :</b>            | Human  |
| <b>Gene :</b>                  | KRT8   |
| <b>Gene ID :</b>               | 3856   |
| <b>Uniprot ID :</b>            | P05787   |
| <b>Format :</b>                | Purified   |
| <b>Alternative Name :</b>      | CK 8, CK8, CYK8, Cytokeratin endo A, K8  |
| <b>Isotype :</b>               | Rabbit IgG   |
| <b>Immunogen Information :</b> | Peptide sequence around aa.72~76 (L-L-S-P-L) derived from Human Keratin 8 (CK8). |

### Description

Keratin 8 is a member of the type II keratin family clustered on the long arm of chromosome 12. Type I and type II keratins heteropolymerize to form intermediate-sized filaments in the cytoplasm of epithelial cells. The product of this gene typically dimerizes with keratin 18 to form an intermediate filament in simple single-layered epithelial cells. This protein plays a role in maintaining cellular structural integrity and also functions in signal transduction and cellular differentiation. Mutations in this gene cause cryptogenic cirrhosis.

### Product Info

|                            |  |
|----------------------------|--|
| <b>Amount :</b>            | 50 µl / 100 µl   |
| <b>Content :</b>           | Supplied at 1.0mg/mL in phosphate buffered saline (without Mg <sup>2+</sup> and Ca <sup>2+</sup> ), pH 7.4, 150mM NaCl, 0.02% sodium azide and 50% glycerol. |
| <b>Storage condition :</b> | Store the antibody at 4°C, stable for 6 months. For long-term storage, store at -20°C. Avoid repeated freeze and thaw cycles.                                |

### Application Note

Predicted MW: 55kd, Western blotting: 1:500~1:1000, Immunohistochemistry: 1:50~1:100, Immunofluorescence: 1:100~1:200

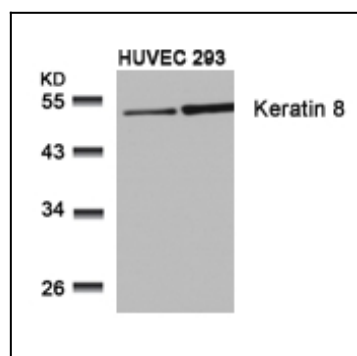


Figure 1: Western blot analysis of extracts from HUVEC and 293 cells using Keratin 8(Ab-74) Antibody 35-1632 .

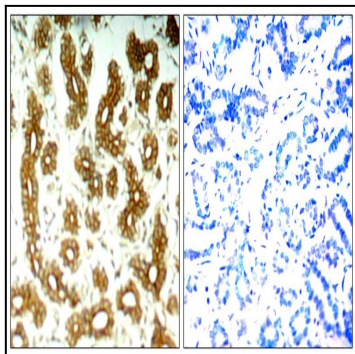


Figure 2: Immunohistochemical analysis of paraffin-embedded human breast carcinoma tissue using Keratin 8(Ab-74) Antibody 35-1632 (left) or the same antibody preincubated with blocking peptide(right).

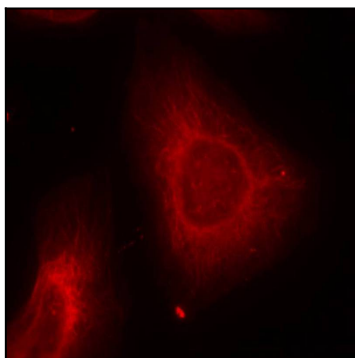


Figure 3: Immunofluorescence staining of methanol-fixed Hela cells using Keratin 8(Ab-74) Antibody 35-1632 .