

### 35-1636: Polyclonal Antibody to PKC Zeta (Ab-410)

<b>Clonality :</b>	Polyclonal
<b>Application :</b>	WB,IHC
<b>Reactivity :</b>	Human,Mouse,Rat
<b>Gene :</b>	PRKCZ
<b>Gene ID :</b>	5590
<b>Uniprot ID :</b>	Q05513
<b>Format :</b>	Purified
<b>Alternative Name :</b>	PKC2, PKC-ZETA, PRKCZ
<b>Isotype :</b>	Rabbit IgG
<b>Immunogen Information :</b>	Peptide sequence around aa. 408~412 ( T-S-T-F-C) derived from PKCz

#### Description

This is a calcium-independent, phospholipid-dependent, serine- and threonine-specific enzyme. PKC is activated by diacylglycerol which in turn phosphorylates a range of cellular proteins. PKC also serves as the receptor for phorbol esters, a class of tumor promoters. Subunit of a quaternary complex that plays a central role in epithelial cell polarization.

#### Product Info

<b>Amount :</b>	50 µl / 100 µl
<b>Content :</b>	Supplied at 1.0mg/mL in phosphate buffered saline (without Mg <sup>2+</sup> and Ca <sup>2+</sup> ), pH 7.4, 150mM NaCl, 0.02% sodium azide and 50% glycerol.
<b>Storage condition :</b>	Store the antibody at 4°C, stable for 6 months. For long-term storage, store at -20°C. Avoid repeated freeze and thaw cycles.

#### Application Note

Predicted MW: 78kd, Western blotting: 1:500~1:1000, Immunohistochemistry: 1:50~1:100

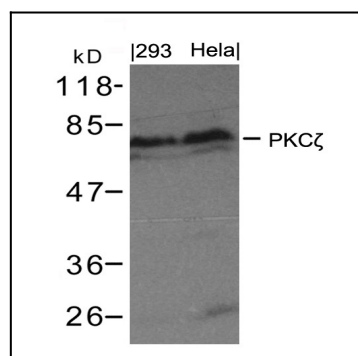


Figure 1: Western blot analysis of extract from 293 cells and HeLa using PKCz(Ab-410) Antibody 35-1636 .

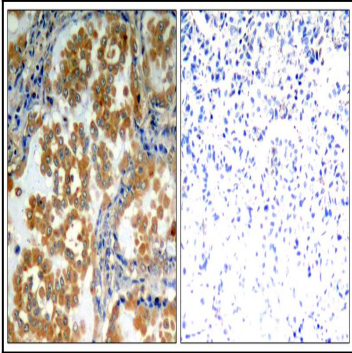


Figure 2: Immunohistochemical analysis of paraffin-embedded human lung carcinoma tissue using PKCz(Ab-410) antibody(35-1636 ).