

35-1637: Polyclonal Antibody to Shc1 (Ab-349)

Clonality :	Polyclonal
Application :	WB,IF
Reactivity :	Human,Mouse,Rat
Gene :	SHC1
Gene ID :	6464
Uniprot ID :	P29353
Format :	Purified
Alternative Name :	SH2 domain protein C1, SHC, SHC-transforming protein 1, SHCA, Src homology 2 domain-containing-transforming protein C1
Isotype :	Rabbit IgG
Immunogen Information :	Peptide sequence around aa.347~351 (H-Q-Y-Y-N) derived from Human Shc1.

Description

Signaling adapter that couples activated growth factor receptors to signaling pathway. Isoform p46Shc and isoform p52Shc, once phosphorylated, couple activated receptor tyrosine kinases to Ras via the recruitment of the GRB2/SOS complex and are implicated in the cytoplasmic propagation of mitogenic signals. Isoform p46Shc and isoform p52Shc may thus function as initiators of the Ras signaling cascade in various non-neuronal systems. Isoform p66Shc does not mediate Ras activation, but is involved in signal transduction pathways that regulate the cellular response to oxidative stress and life span. Isoform p66Shc acts as a downstream target of the tumor suppressor p53 and is indispensable for the ability of stress-activated p53 to induce elevation of intracellular oxidants, cytochrome c release and apoptosis. The expression of isoform p66Shc has been correlated with life span

Product Info

Amount :	50 µl / 100 µl
Content :	Supplied at 1.0mg/mL in phosphate buffered saline (without Mg ²⁺ and Ca ²⁺), pH 7.4, 150mM NaCl, 0.02% sodium azide and 50% glycerol.
Storage condition :	Store the antibody at 4°C, stable for 6 months. For long-term storage, store at -20°C. Avoid repeated freeze and thaw cycles.

Application Note

Predicted MW: 46 52 66kd, Western blotting: 1:500~1:1000, Immunofluorescence: 1:100~1:200

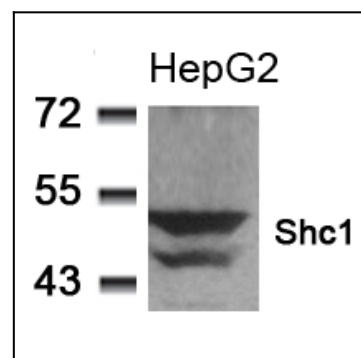


Figure 1: Western blot analysis of extracts from HepG2 cells using Shc1(Ab-349) Antibody 35-1637 .

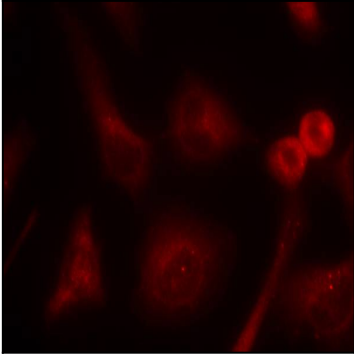


Figure 2: Immunofluorescence staining of methanol-fixed HeLa cells using Shc1(Ab-349) Antibody 35-1637 .