

35-1651: Polyclonal Antibody to Niban-like protein (Ab-712)

Clonality :	Polyclonal
Application :	WB,IF
Reactivity :	Human,Mouse
Gene :	FAM129B
Gene ID :	64855
Uniprot ID :	Q96TA1
Format :	Purified
Alternative Name :	C9orf88
Isotype :	Rabbit IgG
Immunogen Information :	Peptide sequence around aa.710~714 (Q-V-S-S-P) derived from Human Niban-like protein.

Description

a maternal imprinting gene. May possess growth suppressor activity. Two major alternatively spliced isoforms have been described. forms. One form, Meg3-proximal (Meg3p), contains exons 1-3. The second form, Meg3-distal (Meg3d) did not contain exons 1-3 and was present in oocytes and in 1- and 2-cell embryos Adachi H, Majima S, et al. Oncogene. 2004 Apr 22;23(19):3495-500 Matsumoto F, Fujii H, et al. Hum Pathol. 2006 Dec; 37(12):1592-600.

Product Info

Amount :	50 µl / 100 µl
Content :	Supplied at 1.0mg/mL in phosphate buffered saline (without Mg ²⁺ and Ca ²⁺), pH 7.4, 150mM NaCl, 0.02% sodium azide and 50% glycerol.
Storage condition :	Store the antibody at 4°C, stable for 6 months. For long-term storage, store at -20°C. Avoid repeated freeze and thaw cycles.

Application Note

Predicted MW: 82kd, Western blotting: 1:500~1:1000, Immunofluorescence: 1:100~1:200

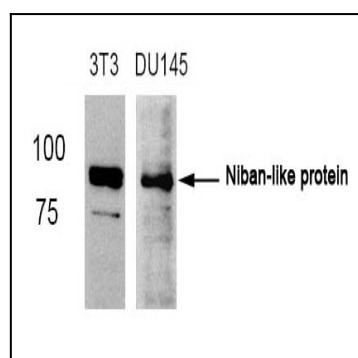


Figure 1: Western blot analysis of extracts from 3T3 and DU145 cells using Niban-like protein (Ab-712) Antibody 35-1651 .

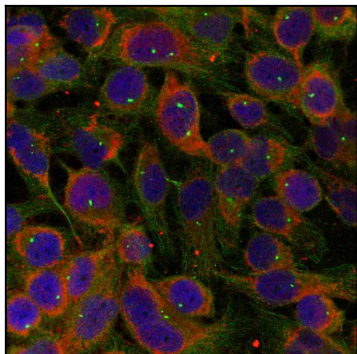


Figure 2: Immunofluorescence staining of methanol-fixed HeLa cells using Niban-like protein(Ab-712) Antibody 35-1651 .