

35-1652: Polyclonal Antibody to PRL-3

| | |
|--------------------------------|--|
| Clonality : | Polyclonal |
| Application : | WB |
| Reactivity : | Human,Mouse,Rat |
| Gene : | PTP4A3 |
| Gene ID : | 11156 |
| Uniprot ID : | O75365 |
| Format : | Purified |
| Alternative Name : | protein tyrosine phosphatase type IVA, PRL3, PRL-R, PTP4A3 |
| Isotype : | Rabbit IgG |
| Immunogen Information : | Peptide sequence around aa. 161-166 (K-D-P-H-T) derived from Human PTP4A3. |

Description

Protein tyrosine phosphatase which stimulates progression from G1 into S phase during mitosis. Enhances cell proliferation, cell motility and invasive activity, and promotes cancer metastasis. May be involved in the progression of cardiac hypertrophy by inhibiting intracellular calcium mobilization in response to angiotensin II.

Product Info

| | |
|----------------------------|--|
| Amount : | 50 μ l / 100 μ l |
| Content : | Supplied at 1.0mg/mL in phosphate buffered saline (without Mg ²⁺ and Ca ²⁺), pH 7.4, 150mM NaCl, 0.02% sodium azide and 50% glycerol. |
| Storage condition : | Store the antibody at 4°C, stable for 6 months. For long-term storage, store at -20°C. Avoid repeated freeze and thaw cycles. |

Application Note

Predicted MW: 22kd, Western blotting: 1:500~1:1000

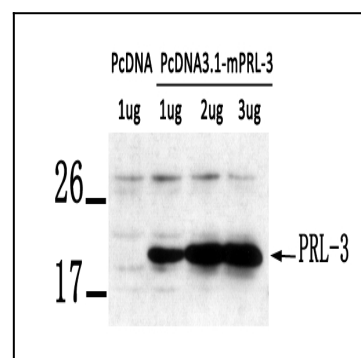


Figure 1: Western blot analysis of extract from LX-2 cells transfected with PRL-3 using PRL-3 Antibody 35-1652 .