

35-1658: Polyclonal Antibody to LC3A

Clonality :	Polyclonal
Application :	WB,IF
Reactivity :	Human,Mouse,Rat
Gene :	MAP1LC3A
Gene ID :	84557
Uniprot ID :	Q9H492
Format :	Purified
Alternative Name :	Microtubule-associated protein 1 light chain 3 alpha, MAP1A/1B light chain 3 A, MAP1A/MAP1B LC3 A, MAP1 light chain 3-like protein 1, Autophagy-related protein LC3 A
Isotype :	Rabbit IgG
Immunogen Information :	Peptide sequence around aa.5~10 (R-P-F-K-Q) derived from Human LC3A.

Description

Probably involved in formation of autophagosomal vacuoles (autophagosomes).

Product Info

Amount :	50 µl / 100 µl
Content :	Supplied at 1.0mg/mL in phosphate buffered saline (without Mg ²⁺ and Ca ²⁺), pH 7.4, 150mM NaCl, 0.02% sodium azide and 50% glycerol.
Storage condition :	Store the antibody at 4°C, stable for 6 months. For long-term storage, store at -20°C. Avoid repeated freeze and thaw cycles.

Application Note

Predicted MW: 18 16 kd, Western blotting: 1:500~1:1000, Immunofluorescence: 1:100~1:200

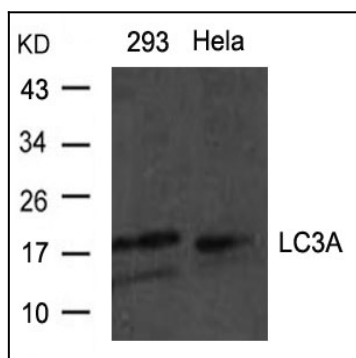


Figure 1: Western blot analysis of extracts from HeLa and 293 cells using LC3A Antibody 35-1658 .

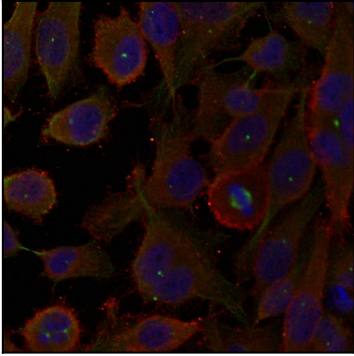


Figure 2: Immunofluorescence staining of methanol-fixed HeLa cells using LC3A Antibody 35-1658 .