

## 35-1659: Polyclonal Antibody to TRPC6

<b>Clonality :</b>	Polyclonal
<b>Application :</b>	WB
<b>Reactivity :</b>	Human,Mouse,Rat
<b>Gene :</b>	Trpc6
<b>Gene ID :</b>	22068
<b>Uniprot ID :</b>	Q61143
<b>Format :</b>	Purified
<b>Alternative Name :</b>	TRP6, FSGS2, FLJ11098
<b>Isotype :</b>	Rabbit IgG
<b>Immunogen Information :</b>	peptide Corresponding to the amino terminal sequence derived from mouse TRPC6.

### Description

The protein encoded by this gene forms a receptor-activated calcium channel in the cell membrane. The channel is activated by diacylglycerol and is thought to be under the control of a phosphatidylinositol second messenger system. Activation of this channel occurs independently of protein kinase C and is not triggered by low levels of intracellular calcium. Defects in this gene are a cause of focal segmental glomerulosclerosis 2 (FSGS2).

### Product Info

<b>Amount :</b>	50 µl / 100 µl
<b>Content :</b>	Supplied at 1.0mg/mL in phosphate buffered saline (without Mg <sup>2+</sup> and Ca <sup>2+</sup> ), pH 7.4, 150mM NaCl, 0.02% sodium azide and 50% glycerol.
<b>Storage condition :</b>	Store the antibody at 4°C, stable for 6 months. For long-term storage, store at -20°C. Avoid repeated freeze and thaw cycles.

### Application Note

Predicted MW: 100kd, Western blotting: 1:500~1:1000

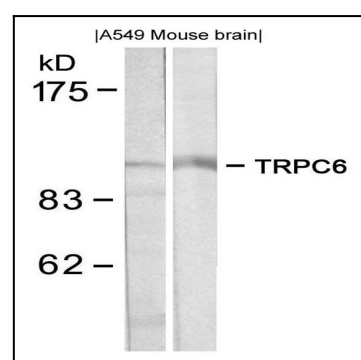


Figure 1: Western blot analysis of extracts from A549 and mouse brain tissue using TRPC6 Antibody 35-1659 .