

## 35-1661: Polyclonal Antibody to Lymphatic vessel endothelial hyaluronic acid receptor 1

<b>Clonality :</b>	Polyclonal
<b>Application :</b>	WB
<b>Reactivity :</b>	Human,Mouse,Rat
<b>Gene :</b>	LYVE1
<b>Gene ID :</b>	10894
<b>Uniprot ID :</b>	Q9Y5Y7
<b>Format :</b>	Purified
<b>Alternative Name :</b>	LYVE1
<b>Isotype :</b>	Rabbit IgG
<b>Immunogen Information :</b>	Peptide sequence around aa.271~275 (K-N-Q-Q-K) derived from Human Lymphatic vessel endothelial hyaluronic acid receptor 1.

### Description

Ligand-specific transporter trafficking between intracellular organelles (TGN) and the plasma membrane. Plays a role in autocrine regulation of cell growth mediated by growth regulators containing cell surface retention sequence binding (CRS). May act as an hyaluronan (HA) transporter, either mediating its uptake for catabolism within lymphatic endothelial cells themselves, or its transport into the lumen of afferent lymphatic vessels for subsequent re-uptake and degradation in lymph nodes.

### Product Info

<b>Amount :</b>	50 µl / 100 µl
<b>Content :</b>	Supplied at 1.0mg/mL in phosphate buffered saline (without Mg <sup>2+</sup> and Ca <sup>2+</sup> ), pH 7.4, 150mM NaCl, 0.02% sodium azide and 50% glycerol.
<b>Storage condition :</b>	Store the antibody at 4°C, stable for 6 months. For long-term storage, store at -20°C. Avoid repeated freeze and thaw cycles.

### Application Note

Predicted MW: 40kd, Western blotting: 1:500~1:1000

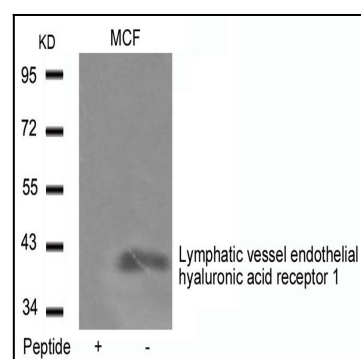


Figure 1: Western blot analysis of extracts from MCF cells using Lymphatic vessel endothelial hyaluronic acid receptor 1 Antibody 35-1661 and the same antibody preincubated with blocking peptide.