

## 35-1672: Polyclonal Antibody to F box and leucine-rich-repeat gene 4

<b>Clonality :</b>	Polyclonal
<b>Application :</b>	WB
<b>Gene :</b>	Fbxl4
<b>Gene ID :</b>	32378
<b>Uniprot ID :</b>	Q9VY46
<b>Format :</b>	Purified
<b>Alternative Name :</b>	FBL4, FBL5, FBXL4
<b>Isotype :</b>	Rabbit IgG
<b>Immunogen Information :</b>	Peptide sequence around aa.1~5 (M-S-L-L-A) derived from Fruit fly F box and leucine-rich-repeat gene 4.

### Description

A member of the family of mammalian F-box proteins. F-box proteins are an expanding family of eukaryotic proteins characterized by an approximately 40 aminoacid motif, the F box (so named because cyclin F was one of the first proteins in which this motif was identified) . Some F-box proteins have been shown to be critical for the controlled degradation of cellular regulatory proteins.

### Product Info

<b>Amount :</b>	50 µl / 100 µl
<b>Content :</b>	Supplied at 1.0mg/mL in phosphate buffered saline (without Mg <sup>2+</sup> and Ca <sup>2+</sup> ), pH 7.4, 150mM NaCl, 0.02% sodium azide and 50% glycerol.
<b>Storage condition :</b>	Store the antibody at 4°C, stable for 6 months. For long-term storage, store at -20°C. Avoid repeated freeze and thaw cycles.

### Application Note

Predicted MW: 76kd, Western blotting: 1:500~1:1000

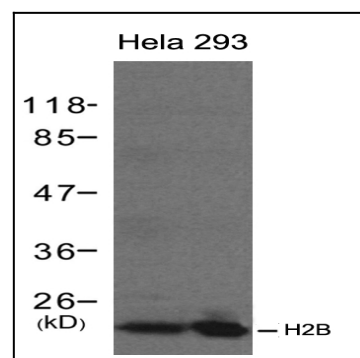


Figure 1: Western blot analysis of extracts from HeLa and 293 cells using H2B Antibody 35-1671 .