

## 35-1683: Polyclonal Antibody to TFE3

<b>Clonality :</b>	Polyclonal
<b>Application :</b>	WB
<b>Reactivity :</b>	Human,Mouse,Rat
<b>Gene :</b>	TFE3
<b>Gene ID :</b>	7030
<b>Uniprot ID :</b>	P19532
<b>Format :</b>	Purified
<b>Alternative Name :</b>	BHLHE33, TFEA, RCCP2
<b>Isotype :</b>	Rabbit IgG
<b>Immunogen Information :</b>	Peptide sequence around aa.303~307 (L-D-V-Y-S) derived from Human TFE3.

### Description

Transcription factor that specifically recognizes and binds E-box sequences (3'-CANNTG-5'). Efficient DNA-binding requires dimerization with itself or with another MiT/TFE family member such as TFEB or MITF. In association with TFEB, activates the expression of CD40L in T-cells, thereby playing a role in T-cell-dependent antibody responses in activated CD4+ T-cells and thymus-dependent humoral immunity. Specifically recognizes the MUE3 box, a subset of E-boxes, present in the immunoglobulin enhancer. It also binds very well to a USF/MLTF site. Clark J., Lu Y.-J., Sidhar S.K., Parker C., Gill S. Oncogene 15:2233-2239(1997) Weterman M.A.J., Wilbrink M., Proc. Natl. Acad. Sci. U.S.A. 93:15294-15298(1996)

### Product Info

<b>Amount :</b>	50 µl / 100 µl
<b>Content :</b>	Supplied at 1.0mg/mL in phosphate buffered saline (without Mg2+ and Ca2+), pH 7.4, 150mM NaCl, 0.02% sodium azide and 50% glycerol.
<b>Storage condition :</b>	Store the antibody at 4°C, stable for 6 months. For long-term storage, store at -20°C. Avoid repeated freeze and thaw cycles.

### Application Note

Predicted MW: 70kd, Western blotting: 1:500~1:1000

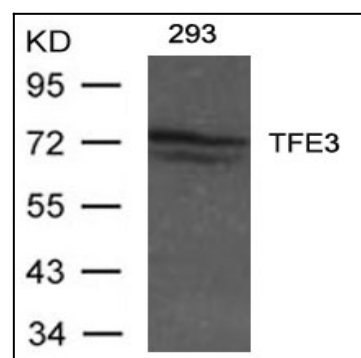


Figure 1: Western blot analysis of extracts from 293 cells using TFE3 Antibody 35-1683 .