

35-1690: Polyclonal Antibody to MAP2K4

Clonality :	Polyclonal
Application :	WB
Reactivity :	Human,Mouse,Rat
Gene :	MAP2K4
Gene ID :	6416
Uniprot ID :	P45985
Format :	Purified
Alternative Name :	JNKK1, MEK4, MKK4, PRKMK4, SERK1
Isotype :	Rabbit IgG
Immunogen Information :	Peptide sequence around aa.352~356(E-S-K-R-P)derived from Human MAP2K4.

Description

SAPK/Erk kinase (SEK1), also known as MKK4 or Jun kinase kinase (JNKK), activates the MAP kinase homologues SAPK and JNK in response to various cellular stresses and inflammatory cytokines (1-3). Activation of SEK1 occurs through MEKK phosphorylation of serine and threonine residues at positions 257 and 261, respectively. Like MEK, SEK is a dual-specificity protein kinase that phosphorylates SAPK/JNK at a conserved T*PY* site in its activation loop (4). Phosphorylation by Akt at Ser80 inhibits SEK1 and suppresses stress-activated signal transduction (5).

Product Info

Amount :	50 µl / 100 µl
Content :	Supplied at 1.0mg/mL in phosphate buffered saline (without Mg ²⁺ and Ca ²⁺), pH 7.4, 150mM NaCl, 0.02% sodium azide and 50% glycerol.
Storage condition :	Store the antibody at 4°C, stable for 6 months. For long-term storage, store at -20°C. Avoid repeated freeze and thaw cycles.

Application Note

Predicted MW: 44kd, Western blotting: 1:500~1:1000

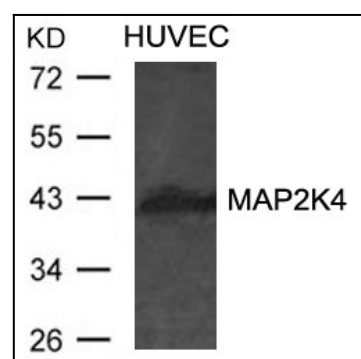


Figure 1: Western blot analysis of extracts from HUVEC cells using MAP2K4 Antibody 35-1690 .