

35-1692: Polyclonal Antibody to GRASP

Clonality :	Polyclonal
Application :	WB
Reactivity :	Human,Mouse,Rat
Gene :	Gripap1
Gene ID :	116493
Uniprot ID :	Q9JHZ4
Format :	Purified
Alternative Name :	Gripap, Grasp, GRIP1-associated protein
Isotype :	Rabbit IgG
Immunogen Information :	Peptide sequence around aa. 814-818(Q-E-I-V-R) derived from Rat GRASP.

Description

GRASP (GRP1-associated scaffold protein, tamalin) is a 395 amino acid protein encoded by the human gene GRASP . GRASP is a scaffold protein that com-prises multiple protein-interacting domains, including a 95 kDa postsynaptic density protein (PSD-95)/discs-large/ZO-1 (PDZ) domain, a leucine-zipper region and a carboxyl-terminal PDZ-binding motif. GRASP is involved with intracellular trafficking and contributes to the macromolecular organization of group 1 metabotropic glutamate receptors (mGluRs) at synapses. GRASP forms a heteromer composed of GRASP , PSCD2 and at least one mGluR-1. It also interacts with PSCD3, mGluR-2, mGluR-3 and mGluR-5. GRASP is highly expressed in brain and has lower levels of expression in lung, heart, embryo, kidney and ovary.

Product Info

Amount :	50 µl / 100 µl
Content :	Supplied at 1.0mg/mL in phosphate buffered saline (without Mg ²⁺ and Ca ²⁺), pH 7.4, 150mM NaCl, 0.02% sodium azide and 50% glycerol.
Storage condition :	Store the antibody at 4°C, stable for 6 months. For long-term storage, store at -20°C. Avoid repeated freeze and thaw cycles.

Application Note

Predicted MW: 95kd, Western blotting: 1:500~1:1000

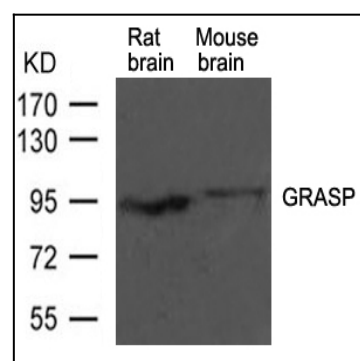


Figure 1: Western blot analysis of extracts from rat brain and mouse brain tissue using GRASP Antibody 35-1692