

35-1698: Polyclonal Antibody to Eif1

Clonality :	Polyclonal
Application :	WB
Reactivity :	Drosophilla
Gene :	EIF1
Gene ID :	10209
Uniprot ID :	P41567
Format :	Purified
Alternative Name :	A121, ISO1, SUI1, EIF1A
Isotype :	Rabbit IgG
Immunogen Information :	Peptide sequence around aa. 4~8 (Q-N-L-N-T) derived from Drosophila Eif1

Description

Necessary for scanning and involved in initiation site selection. Promotes the assembly of 48S ribosomal complexes at the authentic initiation codon of a conventional capped mRNA

Product Info

Amount :	50 µl / 100 µl
Content :	Supplied at 1.0mg/mL in phosphate buffered saline (without Mg ²⁺ and Ca ²⁺), pH 7.4, 150mM NaCl, 0.02% sodium azide and 50% glycerol.
Storage condition :	Store the antibody at 4°C, stable for 6 months. For long-term storage, store at -20°C. Avoid repeated freeze and thaw cycles.

Application Note

Predicted MW: 13kd, Western blotting: 1:500~1:1000

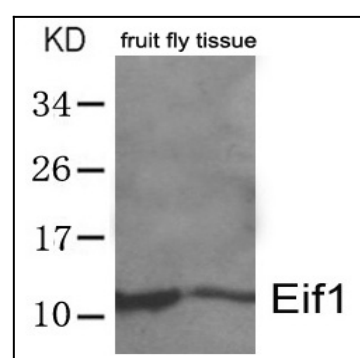


Figure 1: Western blot analysis of extracts from whole fruit fly(drosophila melanogaster) tissue lysate using Eif1 Antibody 35-1698 .