

## 35-1705: Polyclonal Antibody to ABCG2(CD338)

<b>Clonality :</b>	Polyclonal
<b>Application :</b>	WB
<b>Reactivity :</b>	Human
<b>Gene :</b>	BMDP
<b>Gene ID :</b>	9429
<b>Uniprot ID :</b>	Q9UQ0
<b>Format :</b>	Purified
<b>Alternative Name :</b>	BMDP, MRX, ABC15, ABCP, BCRP1
<b>Isotype :</b>	Rabbit IgG
<b>Immunogen Information :</b>	Peptide sequence around aa.160~164( R-I-N-R-V) derived from Human ABCG2(CD338).

### Description

Xenobiotic transporter that may play an important role in the exclusion of xenobiotics from the brain. May be involved in brain-to-blood efflux. Appears to play a major role in the multidrug resistance phenotype of several cancer cell lines. When overexpressed, the transfected cells become resistant to mitoxantrone, daunorubicin and doxorubicin, display diminished intracellular accumulation of daunorubicin, and manifest an ATP-dependent increase in the efflux of rhodamine.

### Product Info

<b>Amount :</b>	50 µl / 100 µl
<b>Content :</b>	Supplied at 1.0mg/mL in phosphate buffered saline (without Mg <sup>2+</sup> and Ca <sup>2+</sup> ), pH 7.4, 150mM NaCl, 0.02% sodium azide and 50% glycerol.
<b>Storage condition :</b>	Store the antibody at 4°C, stable for 6 months. For long-term storage, store at -20°C. Avoid repeated freeze and thaw cycles.

### Application Note

Predicted MW: 65-80kd, Western blotting: 1:500

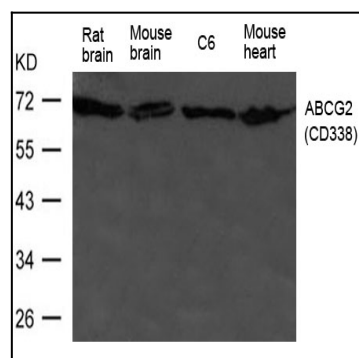


Figure 1: Western blot analysis of extract from HL-60 cells using ABCG2(CD338) Antibody 35-1705