

35-1706: Polyclonal Antibody to AML1(RUNX1)

Clonality :	Polyclonal
Application :	WB
Reactivity :	Human
Gene :	RUNX1
Gene ID :	861
Uniprot ID :	Q01196
Format :	Purified
Alternative Name :	CBFA2, EVI-1, AMLCR1
Isotype :	Rabbit IgG
Immunogen Information :	Peptide sequence around aa.6~10(D-A-S-T-S) derived from Human AML1(RUNX1).

Description

CBF binds to the core site, 5'-PYGPYGGT-3', of a number of enhancers and promoters, including murine leukemia virus, polyomavirus enhancer, T-cell receptor enhancers, LCK, IL-3 and GM-CSF promoters. The α subunit binds DNA and appears to have a role in the development of normal hematopoiesis. Isoform AML-1L interferes with the transactivation activity of RUNX1. Acts synergistically with ELF4 to transactivate the IL-3 promoter and with ELF2 to transactivate the mouse BLK promoter. Inhibits MYST4-dependent transcriptional activation.

Product Info

Amount :	50 μ l / 100 μ l
Content :	Supplied at 1.0mg/mL in phosphate buffered saline (without Mg ²⁺ and Ca ²⁺), pH 7.4, 150mM NaCl, 0.02% sodium azide and 50% glycerol.
Storage condition :	Store the antibody at 4°C, stable for 6 months. For long-term storage, store at -20°C. Avoid repeated freeze and thaw cycles.

Application Note

Predicted MW: 55kd, Western blotting: 1:500~1:1000

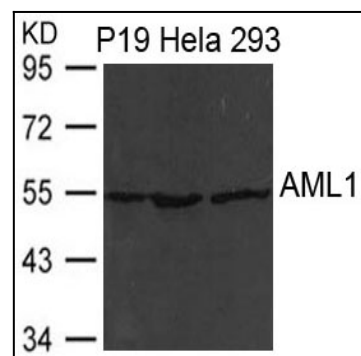


Figure 1: Western blot analysis of extract from P19, HeLa and 293 cells using AML1(RUNX1) Antibody 35-1706