

35-1707: Polyclonal Antibody to CDCP1(CD318)

Clonality :	Polyclonal
Application :	WB
Reactivity :	Human
Gene :	CDCP1
Gene ID :	64866
Uniprot ID :	Q9H5V8
Format :	Purified
Alternative Name :	TRASK, SIMA135
Isotype :	Rabbit IgG

Immunogen Information : Peptide sequence around aa.828~832(T-Q-E-P-M) derived from Human CDCP1(CD318).

Description

May be involved in cell adhesion and cell matrix association. May play a role in the regulation of anchorage versus migration or proliferation versus differentiation via its phosphorylation. May be a novel marker for leukemia diagnosis and for immature hematopoietic stem cell subsets. Belongs to the tetraspanin web involved in tumor progression and metastasis.

Product Info

Amount :	50 µl / 100 µl
Content :	Supplied at 1.0mg/mL in phosphate buffered saline (without Mg ²⁺ and Ca ²⁺), pH 7.4, 150mM NaCl, 0.02% sodium azide and 50% glycerol.
Storage condition :	Store the antibody at 4°C, stable for 6 months. For long-term storage, store at -20°C. Avoid repeated freeze and thaw cycles.

Application Note

Predicted MW: 140kd, Western blotting: 1:500

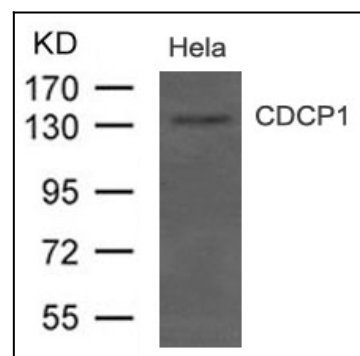


Figure 1: Western blot analysis of extract from HeLa cells using CDCP1(CD318) Antibody 35-1707