

## 35-1727: Polyclonal Antibody to Her3/ErbB3 (Ab-1328)

<b>Clonality :</b>	Polyclonal
<b>Application :</b>	WB,IHC
<b>Reactivity :</b>	Human,Mouse,Rat
<b>Gene :</b>	ERBB3
<b>Gene ID :</b>	2065
<b>Uniprot ID :</b>	P21860
<b>Format :</b>	Purified
<b>Alternative Name :</b>	Tyrosine kinase-type cell surface receptor HER3
<b>Isotype :</b>	Rabbit IgG
<b>Immunogen Information :</b>	Peptide sequence around aa. 1326~1330 (P-D-Y-W-H) derived from Human Her3/ErbB3.

### Description

Binds and is activated by neuregulins and NTAK.

### Product Info

<b>Amount :</b>	50 µl / 100 µl
<b>Content :</b>	Supplied at 1.0mg/mL in phosphate buffered saline (without Mg <sup>2+</sup> and Ca <sup>2+</sup> ), pH 7.4, 150mM NaCl, 0.02% sodium azide and 50% glycerol.
<b>Storage condition :</b>	Store the antibody at 4°C, stable for 6 months. For long-term storage, store at -20°C. Avoid repeated freeze and thaw cycles.

### Application Note

Predicted MW: 185kd, Western blotting: 1:500~1:1000, Immunohistochemistry: 1:50~1:100

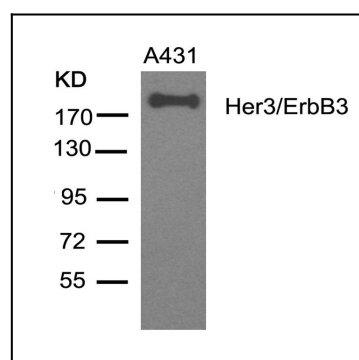


Figure 1: Western blot analysis of extracts from A431 cells using Her3/ErbB3(Ab-1328) Antibody 35-1727 .

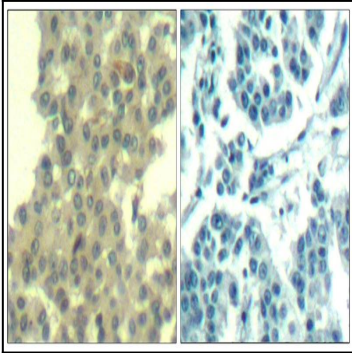


Figure 2: Immunohistochemical analysis of paraffin-embedded human breast carcinoma tissue using Her3/ErbB3(Ab-1328) Antibody 35-1727 (left) or the same antibody preincubated with blocking peptide(right).