

35-1736: Polyclonal Antibody to PLC- Gamma2 (Ab-1217)

Clonality :	Polyclonal
Application :	IHC,IF
Reactivity :	Human,Mouse,Rat
Gene :	PLCG2
Gene ID :	5336
Uniprot ID :	P16885
Format :	Purified
Alternative Name :	PLC-IV, PLC-gamma2, Phospholipase C-gamma-2
Isotype :	Rabbit IgG
Immunogen Information :	Peptide sequence around aa.1215~1219 (F-L-Y-D-T) derived from Human PLCg2.

Description

The production of the second messenger molecules diacylglycerol. (DAG) and inositol 1,4,5-trisphosphate (IP3) is mediated by activated phosphatidylinositol-specific phospholipase C enzymes. It is a crucial enzyme in transmembrane signaling.

Product Info

Amount :	50 µl / 100 µl
Content :	Supplied at 1.0mg/mL in phosphate buffered saline (without Mg ²⁺ and Ca ²⁺), pH 7.4, 150mM NaCl, 0.02% sodium azide and 50% glycerol.
Storage condition :	Store the antibody at 4°C, stable for 6 months. For long-term storage, store at -20°C. Avoid repeated freeze and thaw cycles.

Application Note

Predicted MW: 150kd, Immunohistochemistry: 1:50~1:100, Immunofluorescence: 1:100~1:200

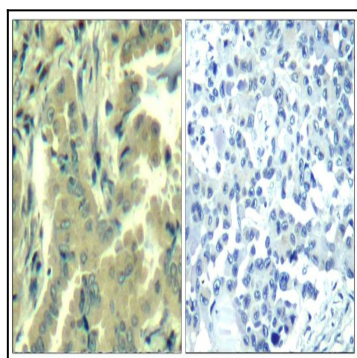


Figure 1: Immunohistochemical analysis of paraffin-embedded human lung carcinoma tissue using PLC-g2(Ab-1217) Antibody 35-1736 (left) or the same antibody preincubated with blocking peptide(right).

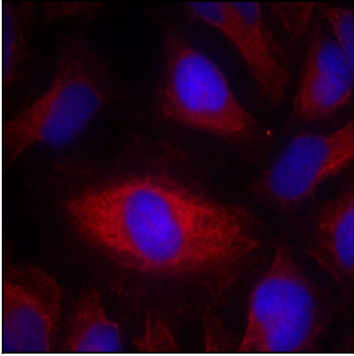


Figure 2: Immunofluorescence staining of methanol-fixed HeLa cells using PLC-g2(Ab-1217) Antibody 35-1736 .