

35-1750: Polyclonal Antibody to Met (Ab-1003)

Clonality :	Polyclonal
Application :	WB,IHC
Reactivity :	Human,Mouse,Rat
Gene :	MET
Gene ID :	4233
Uniprot ID :	P08581
Format :	Purified
Alternative Name :	Scatter factor receptor
Isotype :	Rabbit IgG
Immunogen Information :	Peptide sequence around aa. 1001~1005 (V-D-Y-R-A) derived from Human Met.

Description

Receptor for hepatocyte growth factor and scatter factor. Has a tyrosine-protein kinase activity. Functions in cell proliferation, scattering, morphogenesis and survival.

Product Info

Amount :	50 µl / 100 µl
Content :	Supplied at 1.0mg/mL in phosphate buffered saline (without Mg ²⁺ and Ca ²⁺), pH 7.4, 150mM NaCl, 0.02% sodium azide and 50% glycerol.
Storage condition :	Store the antibody at 4°C, stable for 6 months. For long-term storage, store at -20°C. Avoid repeated freeze and thaw cycles.

Application Note

Predicted MW: 156kd, Western blotting: 1:500~1:1000, Immunohistochemistry: 1:50~1:100

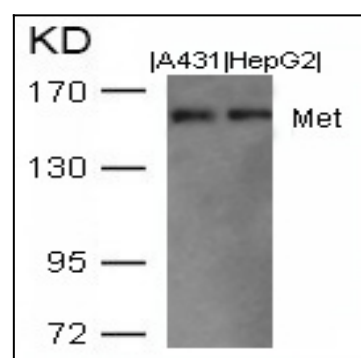


Figure 1: Western blot analysis of extracts from A431 and HepG2 cells using Met(Ab-1003) Antibody 35-1750 .

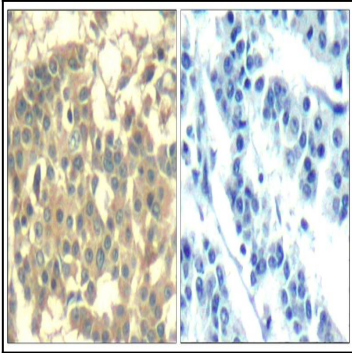


Figure 2: Immunohistochemical analysis of paraffin-embedded human breast carcinoma tissue using Met(Ab-1003) Antibody 35-1750 (left) or the same antibody preincubated with blocking peptide(right).