

### 35-1771: Polyclonal Antibody to EEA1

<b>Clonality :</b>	Polyclonal
<b>Application :</b>	WB
<b>Reactivity :</b>	Human,Mouse,Rat
<b>Gene :</b>	EEA1
<b>Gene ID :</b>	8411
<b>Uniprot ID :</b>	Q15075
<b>Format :</b>	Purified
<b>Alternative Name :</b>	MST105, ZFYVE2, MSTP105
<b>Isotype :</b>	Rabbit IgG
<b>Immunogen Information :</b>	Peptide sequence around aa.12~16(R-V-G-S-Q)derived from Human EEA1.

#### Description

Binds phospholipid vesicles containing phosphatidylinositol 3-phosphate and participates in endosomal trafficking.

#### Product Info

<b>Amount :</b>	50 µl / 100 µl
<b>Content :</b>	Supplied at 1.0mg/mL in phosphate buffered saline (without Mg <sup>2+</sup> and Ca <sup>2+</sup> ), pH 7.4, 150mM NaCl, 0.02% sodium azide and 50% glycerol.
<b>Storage condition :</b>	Store the antibody at 4°C, stable for 6 months. For long-term storage, store at -20°C. Avoid repeated freeze and thaw cycles.

#### Application Note

Predicted MW: 170kd, Western blotting: 1:500~1:1000

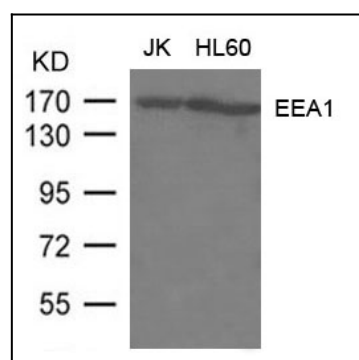


Figure 1: Western blot analysis of extract from JK, HL-60 cells using EEA1 Antibody 35-1771