

35-1782: Polyclonal Antibody to GAPDH

| | |
|--------------------------------|---|
| Clonality : | Polyclonal |
| Application : | WB |
| Reactivity : | Rat,Mouse,Human |
| Gene : | GAPDH |
| Gene ID : | 2597 |
| Uniprot ID : | P04406 |
| Format : | Purified |
| Alternative Name : | G3PD, GAPD, MGC88685 |
| Isotype : | Rabbit IgG |
| Immunogen Information : | Peptide sequence around aa.252~256(P-A-K-Y-D) derived from Human GAPDH. |

Description

Has both glyceraldehyde-3-phosphate dehydrogenase and nitrosylase activities, thereby playing a role in glycolysis and nuclear functions, respectively. Participates in nuclear events including transcription, RNA transport, DNA replication and apoptosis. Nuclear functions are probably due to the nitrosylase activity that mediates cysteine S-nitrosylation of nuclear target proteins such as SIRT1, HDAC2 and PRKDC By similarity. Glyceraldehyde-3-phosphate dehydrogenase is a key enzyme in glycolysis that catalyzes the first step of the pathway by converting D-glyceraldehyde 3-phosphate (G3P) into 3-phospho-D-glyceroyl phosphate.

Product Info

| | |
|----------------------------|--|
| Amount : | 50 µl / 100 µl |
| Content : | Supplied at 1.0mg/mL in phosphate buffered saline (without Mg ²⁺ and Ca ²⁺), pH 7.4, 150mM NaCl, 0.02% sodium azide and 50% glycerol. |
| Storage condition : | Store the antibody at 4°C, stable for 6 months. For long-term storage, store at -20°C. Avoid repeated freeze and thaw cycles. |

Application Note

Predicted MW: 37kd, Western blotting: 1:5000~1:10000

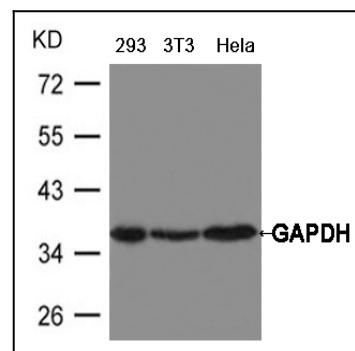


Figure 1: Western blot analysis of extract from HeLa, 293 and 3T3 cells using GAPDH Antibody 35-1782