



35-1784: Polyclonal Antibody to Integrin beta1 (CD29)

Clonality :	Polyclonal
Application :	WB
Reactivity :	Human,Mouse,Rat
Gene :	ITGB1
Gene ID :	3688
Uniprot ID :	P05556
Format :	Purified
Alternative Name :	FNRB, MDF2, VLAB, MSK12, ITGB1
Isotype :	Rabbit IgG
Immunogen Information :	Peptide sequence around aa.790~794 (V-V-N-P-K) derived from Human Integrin b1 (CD29).

Description

Integrins α -1/ β -1, α -2/ β -1, α -10/ β -1 and α -11/ β -1 are receptors for collagen. Integrins α -1/ β -1 and α -2/ β -1 recognize the proline-hydroxylated sequence G-F-P-G-E-R in collagen. Integrins α -2/ β -1, α -3/ β -1, α -4/ β -1, α -5/ β -1, α -8/ β -1, α -10/ β -1, α -11/ β -1 and α -V/ β -1 are receptors for fibronectin. α -4/ β -1 recognizes one or more domains within the alternatively spliced CS-1 and CS-5 regions of fibronectin. Integrin α -5/ β -1 is a receptor for fibrinogen. Integrin α -1/ β -1, α -2/ β -1, α -6/ β -1 and α -7/ β -1 are receptors for laminin. Integrin α -4/ β -1 is a receptor for VCAM1. It recognizes the sequence Q-I-D-S in VCAM1. Integrin α -9/ β -1 is a receptor for VCAM1, cytotactin and osteopontin. It recognizes the sequence A-E-I-D-G-I-E-L in cytotactin. Integrin α -3/ β -1 is a receptor for epiligrin, thrombospondin and CSPG4. α -3/ β -1 may mediate with LGALS3 the stimulation by CSPG4 of endothelial cells migration. Integrin α -V/ β -1 is a receptor for vitronectin. β -1 integrins recognize the sequence R-G-D in a wide array of ligands. Isoform β -1B interferes with isoform β -1A resulting in a dominant negative effect on cell adhesion and migration (in vitro). In case of HIV-1 infection, the interaction with extracellular viral Tat protein seems to enhance angiogenesis in Kaposi's sarcoma lesions. When associated with α -7/ β -1 integrin, regulates cell adhesion and laminin matrix deposition. Involved in promoting endothelial cell motility and angiogenesis. May be involved in up-regulation of the activity of kinases such as PKC via binding to KRT1. Together with KRT1 and GNB2L1/RACK1, serves as a platform for SRC activation or inactivation. Plays a mechanistic adhesive role during telophase, required for the successful completion of cytokinesis

Product Info

Amount :	50 μ l / 100 μ l
Content :	Supplied at 1.0mg/mL in phosphate buffered saline (without Mg ²⁺ and Ca ²⁺), pH 7.4, 150mM NaCl, 0.02% sodium azide and 50% glycerol.
Storage condition :	Store the antibody at 4°C, stable for 6 months. For long-term storage, store at -20°C. Avoid repeated freeze and thaw cycles.

Application Note

Predicted MW: 115 135kd, Western blotting: 1:500~1:1000

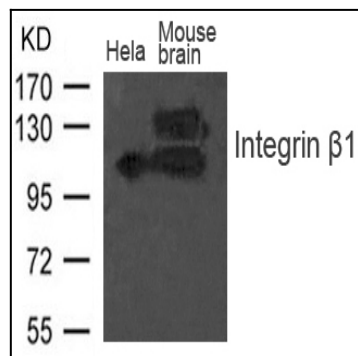


Figure 1: Western blot analysis of extract from Mouse brain tissue and HeLa cells using Integrin b1(CD29) Antibody 35-1784