

35-1785: Polyclonal Antibody to Keratin 19

Clonality :	Polyclonal
Application :	WB,IHC
Reactivity :	Human,Mouse,Rat
Gene :	KRT19
Gene ID :	3880
Uniprot ID :	P08727
Format :	Purified
Alternative Name :	K19,K1CS,MGC15366,KRT19,CK19
Isotype :	Rabbit IgG
Immunogen Information :	Peptide sequence around aa.392~396(N-N-L-S-A) derived from Human Keratin 19.

Description

Involved in the organization of myofibers. Together with KRT8, helps to link the contractile apparatus to dystrophin at the costameres of striated muscle. Stone M.R., O'Neill A., Catino D., Bloch R.J. Mol. Biol. Cell 16:4280-4293(2005)

Product Info

Amount :	50 µl / 100 µl
Content :	Supplied at 1.0mg/mL in phosphate buffered saline (without Mg ²⁺ and Ca ²⁺), pH 7.4, 150mM NaCl, 0.02% sodium azide and 50% glycerol.
Storage condition :	Store the antibody at 4°C, stable for 6 months. For long-term storage, store at -20°C. Avoid repeated freeze and thaw cycles.

Application Note

Predicted MW: 41kd, Western blotting: 1:500~1:1000

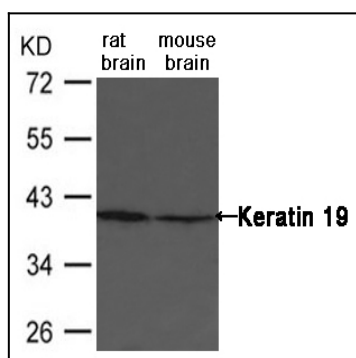


Figure 1: Western blot analysis of extract from rat and mouse brain tissue using Keratin 19 Antibody 35-1785

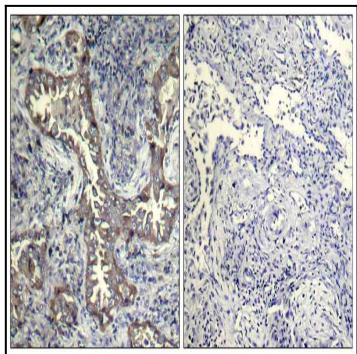


Figure 2: Immunohistochemical analysis of paraffin-embedded human breast cancer tissue using Keratin 19 Antibody 35-1785 (left) or the same antibody preincubated with blocking peptide (right).

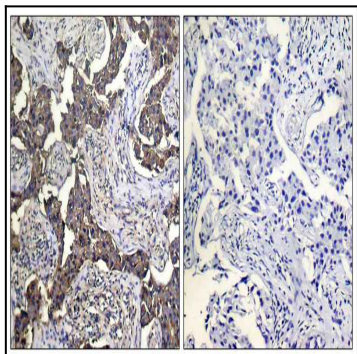


Figure 3: Immunohistochemical analysis of paraffin-embedded human lung cancer tissue using Keratin 19 Antibody 35-1785 (left) or the same antibody preincubated with blocking peptide (right).