

35-1787: Polyclonal Antibody to Tubulin beta-III

Clonality :	Polyclonal
Application :	WB
Reactivity :	Mouse, Human
Gene :	TUBB3
Gene ID :	10381
Uniprot ID :	Q13509
Format :	Purified
Alternative Name :	TUBB4, CFEOM3A, TUBB3
Isotype :	Rabbit IgG
Immunogen Information :	Peptide sequence around aa.442~446(E-E-S-E-A) derived from Human Tubulin b-III.

Description

Tubulin is the major constituent of microtubules. It binds two moles of GTP, one at an exchangeable site on the beta chain and one at a non-exchangeable site on the α -chain. TUBB3 plays a critical role in proper axon guidance and maintenance.

Product Info

Amount :	50 μ l / 100 μ l
Content :	Supplied at 1.0mg/mL in phosphate buffered saline (without Mg^{2+} and Ca^{2+}), pH 7.4, 150mM NaCl, 0.02% sodium azide and 50% glycerol.
Storage condition :	Store the antibody at 4°C, stable for 6 months. For long-term storage, store at -20°C. Avoid repeated freeze and thaw cycles.

Application Note

Predicted MW: 55kd, Western blotting: 1:500~1:1000

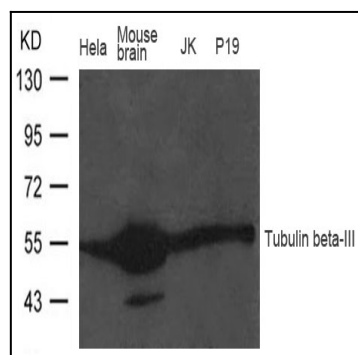


Figure 1: Western blot analysis of extract from Mouse brain tissue, HeLa, JK and P19 cells using Tubulin beta-III Antibody 35-1787