

35-1798: Polyclonal Antibody to Doublecortin

Clonality :	Polyclonal
Application :	WB
Reactivity :	Human,Mouse,Rat
Gene :	DCX
Gene ID :	1641
Uniprot ID :	O43602
Format :	Purified
Alternative Name :	DCX, DC, DBCN
Isotype :	Rabbit IgG
Immunogen Information :	Peptide sequence around aa.413~417(P-T-S-P-G) derived from Human Doublecortin.

Description

Seems to be required for initial steps of neuronal dispersion and cortex lamination during cerebral cortex development. May act by competing with the putative neuronal protein kinase DCAMKL1 in binding to a target protein. May in that way participate in a signaling pathway that is crucial for neuronal interaction before and during migration, possibly as part of a calcium ion-dependent signal transduction pathway. May be part with LIS-1 of an overlapping, but distinct, signaling pathways that promote neuronal migration.

Product Info

Amount :	50 µl / 100 µl
Content :	Supplied at 1.0mg/mL in phosphate buffered saline (without Mg ²⁺ and Ca ²⁺), pH 7.4, 150mM NaCl, 0.02% sodium azide and 50% glycerol.
Storage condition :	Store the antibody at 4°C, stable for 6 months. For long-term storage, store at -20°C. Avoid repeated freeze and thaw cycles.

Application Note

Predicted MW: 40-45kd, Western blotting: 1:500~1:1000

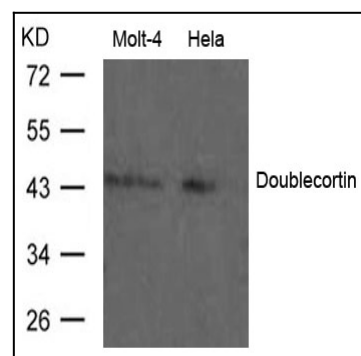


Figure 1: Western blot analysis of extract from Molt-4 and HeLa cells using Doublecortin Antibody 35-1798