

## 35-1814: Polyclonal Antibody to E2F-1

<b>Clonality :</b>	Polyclonal
<b>Application :</b>	WB
<b>Reactivity :</b>	Human,Mouse,Rat
<b>Gene :</b>	E2F1
<b>Gene ID :</b>	1869
<b>Uniprot ID :</b>	Q01094
<b>Format :</b>	Purified
<b>Alternative Name :</b>	RBP3, E2F-1, RBAP1, RBBP3
<b>Isotype :</b>	Rabbit IgG
<b>Immunogen Information :</b>	Peptide sequence around aa.430~434(G-D-L-T-P) derived from Human E2F-1

### Description

Transcription activator that binds DNA cooperatively with dp proteins through the E2 recognition site, 5'-TTTC[CG]CGC-3' found in the promoter region of a number of genes whose products are involved in cell cycle regulation or in DNA replication. The DRTF1/E2F complex functions in the control of cell-cycle progression from G1 to S phase. E2F-1 binds preferentially RB1 protein, in a cell-cycle dependent manner. It can mediate both cell proliferation and p53-dependent apoptosis. "P53 and E2F-1 cooperate to mediate apoptosis." Wu X., Levine A.J. Proc. Natl. Acad. Sci. U.S.A. 91:3602-3606(1994) "Regulation of E2F1 activity by acetylation." Martinez-Balbas M.A., Bauer U.M., Nielsen S.J., Brehm A., Kouzarides T. EMBO J. 19:662-671(2000) "Regulation of E2F1 function by the nuclear corepressor KAP1." Wang C., Rauscher F.J. III, Cress W.D., Chen J. J. Biol. Chem. 282:29902-29909(2007)

### Product Info

<b>Amount :</b>	50 µl / 100 µl
<b>Content :</b>	Supplied at 1.0mg/mL in phosphate buffered saline (without Mg <sup>2+</sup> and Ca <sup>2+</sup> ), pH 7.4, 150mM NaCl, 0.02% sodium azide and 50% glycerol.
<b>Storage condition :</b>	Store the antibody at 4°C, stable for 6 months. For long-term storage, store at -20°C. Avoid repeated freeze and thaw cycles.

### Application Note

Predicted MW: 70kd, Western blotting: 1:500~1:1000

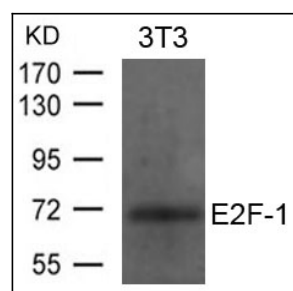


Figure 1: Western blot analysis of extracts from 3T3 cells using E2F-1 Antibody 35-1814 .