

## 35-1815: Polyclonal Antibody to CRABP2

<b>Clonality :</b>	Polyclonal
<b>Application :</b>	WB
<b>Reactivity :</b>	Rat,Human
<b>Gene :</b>	CRABP2
<b>Gene ID :</b>	1382
<b>Uniprot ID :</b>	P29373
<b>Format :</b>	Purified
<b>Alternative Name :</b>	RBP6, CRABP-II
<b>Isotype :</b>	Rabbit IgG
<b>Immunogen Information :</b>	Peptide sequence around aa.87~91(K-W-E-S-E) derived from Human CRABP2

### Description

Transports retinoic acid to the nucleus. Regulates the access of retinoic acid to the nuclear retinoic acid receptors "Direct channeling of retinoic acid between cellular retinoic acid-binding protein II and retinoic acid receptor sensitizes mammary carcinoma cells to retinoic acid-induced growth arrest.

### Product Info

<b>Amount :</b>	50 µl / 100 µl
<b>Content :</b>	Supplied at 1.0mg/mL in phosphate buffered saline (without Mg <sup>2+</sup> and Ca <sup>2+</sup> ), pH 7.4, 150mM NaCl, 0.02% sodium azide and 50% glycerol.
<b>Storage condition :</b>	Store the antibody at 4°C, stable for 6 months. For long-term storage, store at -20°C. Avoid repeated freeze and thaw cycles.

### Application Note

Predicted MW: 16kd, Western blotting: 1:500~1:1000

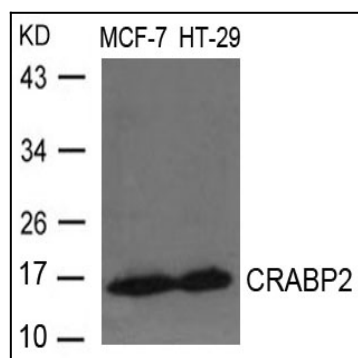


Figure 1: Western blot analysis of extracts from MCF-7 and HT-29 cells using CRABP2 Antibody 35-1815 .