

## 35-1816: Polyclonal Antibody to Keratin 7

<b>Clonality :</b>	Polyclonal
<b>Application :</b>	WB
<b>Reactivity :</b>	Human
<b>Gene :</b>	KRT7
<b>Gene ID :</b>	3855
<b>Uniprot ID :</b>	P08729
<b>Format :</b>	Purified
<b>Alternative Name :</b>	K7, CK7, SCL, K2C7, MGC3625
<b>Isotype :</b>	Rabbit IgG
<b>Immunogen Information :</b>	Peptide sequence around aa.22~26(A-Q-V-R-L) derived from Human Keratin 7

### Description

Blocks interferon-dependent interphase and stimulates DNA synthesis in cells. Involved in the translational regulation of the human papillomavirus type 16 E7 mRNA (HPV16 E7). "Sarcolelectin (SCL): structure and expression of the recombinant molecule."

### Product Info

<b>Amount :</b>	50 µl / 100 µl
<b>Content :</b>	Supplied at 1.0mg/mL in phosphate buffered saline (without Mg <sup>2+</sup> and Ca <sup>2+</sup> ), pH 7.4, 150mM NaCl, 0.02% sodium azide and 50% glycerol.
<b>Storage condition :</b>	Store the antibody at 4°C, stable for 6 months. For long-term storage, store at -20°C. Avoid repeated freeze and thaw cycles.

### Application Note

Predicted MW: 52kd, Western blotting: 1:500~1:1000

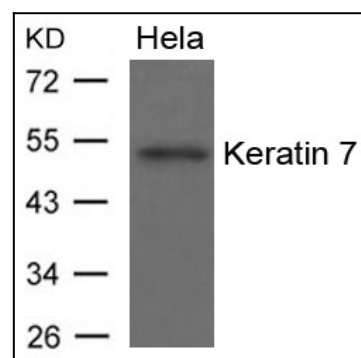


Figure 1: Western blot analysis of extracts from HeLa cells using Keratin 7 Antibody 35-1816 .