

35-1825: Polyclonal Antibody to E2F-2

Clonality :	Polyclonal
Application :	WB
Reactivity :	Mouse,Human
Gene :	E2F2
Gene ID :	1870
Uniprot ID :	Q14209
Format :	Purified
Alternative Name :	E2F-2
Isotype :	Rabbit IgG
Immunogen Information :	Peptide sequence around aa.425~429(L-F-D-S-Y) derived from Human E2F-2.

Description

Transcription activator that binds DNA cooperatively with DP proteins through the E2 recognition site, 5'-TTTC[CG]CGC-3' found in the promoter region of a number of genes whose products are involved in cell cycle regulation or in DNA replication. The DRTF1/E2F complex functions in the control of cell-cycle progression from g1 to s phase. E2F-2 binds specifically to RB1 protein, in a cell-cycle dependent manner.

Product Info

Amount :	50 µl / 100 µl
Content :	Supplied at 1.0mg/mL in phosphate buffered saline (without Mg ²⁺ and Ca ²⁺), pH 7.4, 150mM NaCl, 0.02% sodium azide and 50% glycerol.
Storage condition :	Store the antibody at 4°C, stable for 6 months. For long-term storage, store at -20°C. Avoid repeated freeze and thaw cycles.

Application Note

Predicted MW: 45kd, Western blotting: 1:500~1:1000

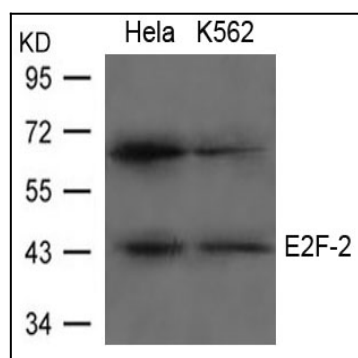


Figure 1: Western blot analysis of extracts from HeLa and K562 cells using E2F-2 Antibody 35-1825 .