

35-1838: Polyclonal Antibody to SCF

| | |
|--------------------------------|---|
| Clonality : | Polyclonal |
| Application : | WB |
| Reactivity : | Human, Mouse |
| Gene : | KITLG |
| Gene ID : | 4254 |
| Uniprot ID : | P21583 |
| Format : | Purified |
| Alternative Name : | SF, MGF, FPH2, KL-1, Kitl |
| Isotype : | Rabbit IgG |
| Immunogen Information : | Peptide sequence around aa.265~269(E-K-E-R-E) derived from Human SCF. |

Description

Ligand for the receptor-type protein-tyrosine kinase KIT. Plays an essential role in the regulation of cell survival and proliferation, hematopoiesis, stem cell maintenance, gametogenesis, mast cell development, migration and function, and in melanogenesis. KITLG/SCF binding can activate several signaling pathways. Promotes phosphorylation of PIK3R1, the regulatory subunit of phosphatidylinositol 3-kinase, and subsequent activation of the kinase AKT1. KITLG/SCF and KIT also transmit signals via GRB2 and activation of RAS, RAF1 and the MAP kinases MAPK1/ERK2 and/or MAPK3/ERK1. KITLG/SCF and KIT promote activation of STAT family members STAT1, STAT3 and STAT5. KITLG/SCF and KIT promote activation of PLCG1, leading to the production of the cellular signaling molecules diacylglycerol and inositol-1,4,5-trisphosphate. KITLG/SCF acts synergistically with other cytokines, probably interleukins.

Product Info

| | |
|----------------------------|--|
| Amount : | 50 µl / 100 µl |
| Content : | Supplied at 1.0mg/mL in phosphate buffered saline (without Mg ²⁺ and Ca ²⁺), pH 7.4, 150mM NaCl, 0.02% sodium azide and 50% glycerol. |
| Storage condition : | Store the antibody at 4°C, stable for 6 months. For long-term storage, store at -20°C. Avoid repeated freeze and thaw cycles. |

Application Note

Predicted MW: 25-38kd, Western blotting: 1:500~1:1000

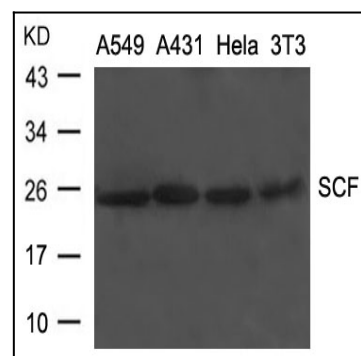


Figure 1: Western blot analysis of extracts from A549, A431, HeLa and 3T3 cells using SCF Antibody 35-1838 .