

35-1843: Polyclonal Antibody to C/EBPbeta

Clonality :	Polyclonal
Application :	WB
Reactivity :	Human
Gene :	CEBPB
Gene ID :	1051
Uniprot ID :	P17676
Format :	Purified
Alternative Name :	IL6DBP, CRP2, TCF5, LAP, NF-IL6
Isotype :	Rabbit IgG
Immunogen Information :	Peptide sequence around aa.336~340(E-P-L-L-A) derived from Human C/EBPb.

Description

Important transcriptional activator in the regulation of genes involved in immune and inflammatory responses. Specifically binds to an IL-1 response element in the IL-6 gene. NF-IL6 also binds to regulatory regions of several acute-phase and cytokines genes. It probably plays a role in the regulation of acute-phase reaction, inflammation and hemopoiesis. The consensus recognition site is 5'-T[TG]NNGNAA[TG]-3'. Functions in brown adipose tissue (BAT) differentiation

Product Info

Amount :	50 µl / 100 µl
Content :	Supplied at 1.0mg/mL in phosphate buffered saline (without Mg ²⁺ and Ca ²⁺), pH 7.4, 150mM NaCl, 0.02% sodium azide and 50% glycerol.
Storage condition :	Store the antibody at 4°C, stable for 6 months. For long-term storage, store at -20°C. Avoid repeated freeze and thaw cycles.

Application Note

Predicted MW: 36kd, Western blotting: 1:500~1:1000

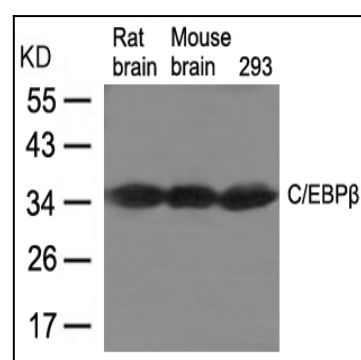


Figure 1: Western blot analysis of extracts from Rat brain, Mouse brain tissue and 293 cells using C/EBPβ Antibody 35-1843 .