

### 35-1845: Polyclonal Antibody to MMP-9

<b>Clonality :</b>	Polyclonal
<b>Application :</b>	WB
<b>Reactivity :</b>	Human
<b>Gene :</b>	MMP9
<b>Gene ID :</b>	4318
<b>Uniprot ID :</b>	P14780
<b>Format :</b>	Purified
<b>Alternative Name :</b>	GELB,CLG4B,MMP-9,MANDP2
<b>Isotype :</b>	Rabbit IgG
<b>Immunogen Information :</b>	Peptide sequence around aa.110-114(F-E-G-D-L) derived from Human MMP-9.

#### Description

May play an essential role in local proteolysis of the extracellular matrix and in leukocyte migration. Could play a role in bone osteoclastic resorption. Cleaves KiSS1 at a Gly-I-Leu bond. Cleaves type IV and type V collagen into large C-terminal three quarter fragments and shorter N-terminal one quarter fragments. Degrades fibronectin but not laminin or Pz-peptide.

#### Product Info

<b>Amount :</b>	50 µl / 100 µl
<b>Content :</b>	Supplied at 1.0mg/mL in phosphate buffered saline, pH 7.4, 0.02% sodium azide
<b>Storage condition :</b>	Store the antibody at 4°C, stable for 6 months. For long-term storage, store at -20°C. Avoid repeated freeze and thaw cycles.

#### Application Note

Predicted MW: 84 92kd, Western blotting: 1: 500~1: 1000

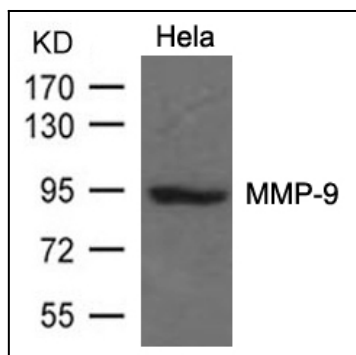


Figure 1: Western blot analysis of extracts from HeLa cells using MMP-9 Antibody 35-1845 .