

35-1850: Polyclonal Antibody to S6 Ribosomal Protein (Ab-235/236)

| | |
|--------------------------------|--|
| Clonality : | Polyclonal |
| Application : | WB |
| Reactivity : | Human,Mouse,Rat |
| Gene : | RPS6 |
| Gene ID : | 6194 |
| Uniprot ID : | P62753 |
| Format : | Purified |
| Alternative Name : | NP33,RPS6,RS6 |
| Isotype : | Rabbit IgG |
| Immunogen Information : | Peptide sequence around aa.233-238(R-L-S-S-L-R) derived from Human S6 Ribosomal Protein. |

Description

May play an important role in controlling cell growth and proliferation through the selective translation of particular classes of mRNA.

Product Info

| | |
|----------------------------|---|
| Amount : | 50 μ l / 100 μ l |
| Content : | 1.0 mg/ml,100 μ l |
| Storage condition : | Store the antibody at 4°C, stable for 6 months. For long-term storage, store at -20°C. Avoid repeated freeze and thaw cycles. |

Application Note

Predicted MW: 32kd, Western blotting: 1: 500~1: 1000

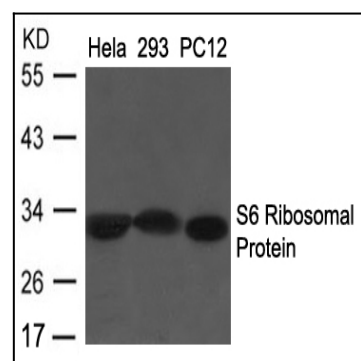


Figure 1: Western blot analysis of extracts from HeLa, 293 and PC12 cells using S6 Ribosomal Protein (Ab-235/236) Antibody 35-1850 .