

35-1873: Polyclonal Antibody to GIT1 (Ab-383)

| | |
|--------------------------------|--|
| Clonality : | Polyclonal |
| Application : | WB |
| Reactivity : | Rat,Mouse,Human |
| Gene : | GIT1 |
| Gene ID : | 28964 |
| Uniprot ID : | Q9Y2X7 |
| Format : | Purified |
| Alternative Name : | ARF,GAP,CAT-1,CAT1 |
| Isotype : | Rabbit IgG |
| Immunogen Information : | Peptide sequence around aa.381~385 (H-D-Y-D-S) derived from Human GIT1 . |

Product Info

| | |
|----------------------------|---|
| Amount : | 50 µl / 100 µl |
| Purification : | GTPase-activating protein for the ADP ribosylation factor family. May serve as a scaffold to bring together molecules to form signaling modules controlling vesicle trafficking, adhesion and cytoskeletal organization. Increases the speed of cell migration, as well as the size and rate of formation of protrusions, possibly by targeting PAK1 to adhesions and the leading edge of lamellipodia. Sequesters inactive non-tyrosine-phosphorylated paxillin in cytoplasmic complexes. Manabe R., Kovalenko M., Webb D.J., Horwitz A.R.J. Cell Sci. 115:1497-1510(2002) |
| Content : | Supplied at 1.0mg/mL in phosphate buffered saline (without Mg2+ and Ca2+), pH 7.4, 150mM NaCl, 0.02% sodium azide and 50% glycerol. |
| Storage condition : | Store the antibody at 4°C, stable for 6 months. For long-term storage, store at -20°C. Avoid repeated freeze and thaw cycles. |

Application Note

Western blotting :1:500~1:1000

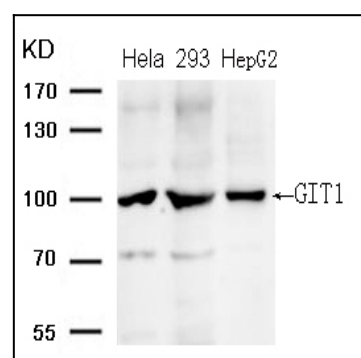


Figure 1: Western blot analysis of extracts from HeLa, 293 and HepG2 cells using GIT1 (Ab-383) Antibody 35-1873 .