

## 11-201: Rabbit IgG Isotype Control

**Clonality :** Polyclonal  
**Application :** ELISA, FACS  
**Isotype :** Rabbit IgG

### Product Info

**Amount :** 25 µg / 100 µg  
**Purification :** Affinity Chromatography  
**Content :** 0.5 mg/ml, Supplied in PBS/Sodium azide  
**Storage condition :** Store the Rabbit isotype control at 4°C, stable for 6 months. For long-term storage, store at -20°C. Avoid repeated freeze and thaw cycles.

### Application Note

Flow Cytometric analysis- 0.5-1 µg/10<sup>6</sup> cells

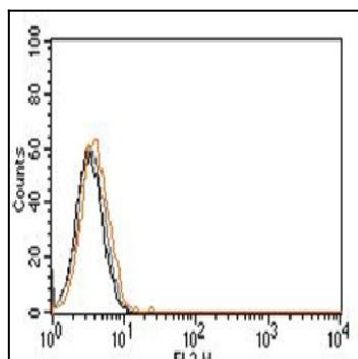


Figure-1: Cell surface flow analysis of Rabbit IgG Isotype control in Jurkat Cell line using 0.5/10<sup>6</sup> cells. Black represent cell alone, grey represent secondary antibody control and orange represent Rabbit IgG Isotype with anti-rabbit secondary antibody conjugated with PE (Cat No.-11-201).

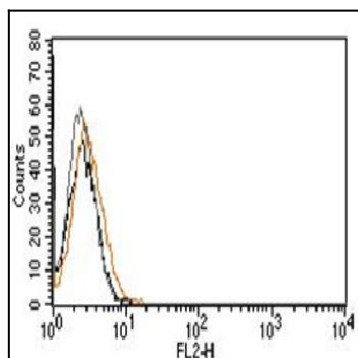


Figure-2: Cell surface flow analysis of Rabbit IgG Isotype control in MCF-7 Cell line using 0.5/10<sup>6</sup> cells. Black represent cell alone, grey represent secondary antibody control and orange represent Rabbit IgG Isotype with anti-rabbit secondary antibody conjugated with PE (Cat No.-11-201).

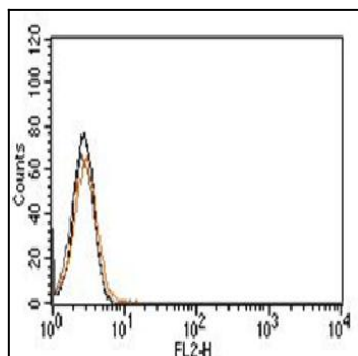


Figure-3: Cell surface flow analysis of Rabbit IgG Isotype control in EL-4 Cell line using  $0.5/10^6$  cells. Black represent cell alone, grey represent secondary antibody control and orange represent Rabbit IgG Isotype with anti-rabbit secondary antibody conjugated with PE (Cat No.-11-201).

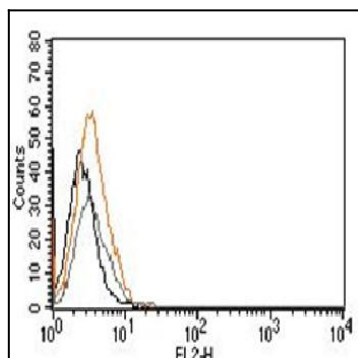


Figure-4: Cell surface flow analysis of Rabbit IgG Isotype control in 3T3 Cell line using  $0.5/10^6$  cells. Black represent cell alone, grey represent secondary antibody control and orange represent Rabbit IgG Isotype with anti-rabbit secondary antibody conjugated with PE (Cat No.-11-201).