

## 11-201-F: Rabbit IgG Isotype Control- FITC Conjugated

**Clonality :** Polyclonal  
**Application :** ELISA,FACS  
**Conjugate :** FITC  
**Isotype :** Rabbit IgG

### Product Info

**Amount :** 25 µg / 100 µg  
**Purification :** Affinity Chromatography  
**Content :** 0.2 mg/ml in Tris buffer containing 0.05% Azide  
**Storage condition :** Store the antibody at 4°C; stable for 6 months.

### Application Note

Flow Cytometric analysis- 0.5-1 µg/10<sup>6</sup> cells

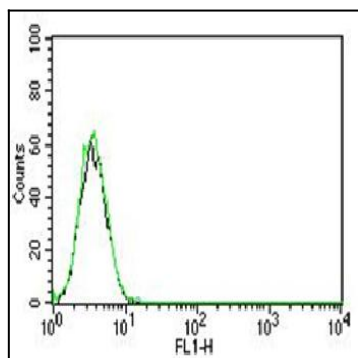


Figure-1: Cell surface flow analysis of FITC conjugated Rabbit IgG Isotype control in Jurkat Cell line using 0.5/10<sup>6</sup> cells. Black represent cell alone, green represent Rabbit IgG Isotype control conjugated with FITC (Cat No.-11-201-F).

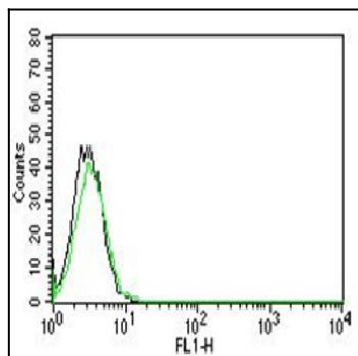


Figure-2: Cell surface flow analysis of FITC conjugated Rabbit IgG Isotype control in MCF-7 Cell line using 0.5/10<sup>6</sup> cells. Black represent cell alone, green represent Rabbit IgG Isotype control conjugated with FITC (Cat No.-11-201-F).

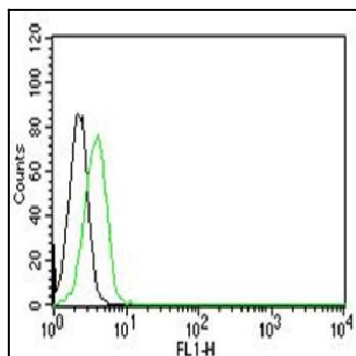


Figure-3: Cell surface flow analysis of FITC conjugated Rabbit IgG Isotype control in EL-4 Cell line using  $0.5/10^6$  cells. Black represent cell alone, green represent Rabbit IgG Isotype control conjugated with FITC (Cat No.-11-201-F).

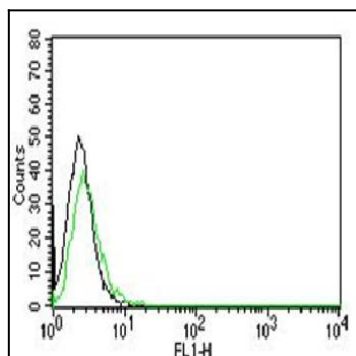


Figure-4: Cell surface flow analysis of FITC conjugated Rabbit IgG Isotype control in 3T3 Cell line using  $0.5/10^6$  cells. Black represent cell alone, green represent Rabbit IgG Isotype control conjugated with FITC (Cat No.-11-201-F).