

## 11-201-PE: Rabbit IgG Isotype control- PE Conjugated

**Clonality :** Polyclonal  
**Application :** ELISA,FACS  
**Conjugate :** PE  
**Isotype :** Rabbit IgG

### Product Info

**Amount :** 100 Tests  
**Purification :** Affinity Chromatography  
**Content :** 0.04mg/ml in PBS containing 0.05% Azide  
**Storage condition :** Store the Isotype control at 4°C, stable for 6 months.

### Application Note

Flow Cytometric analysis- 2.5-5  $\mu\text{l}/10^6$

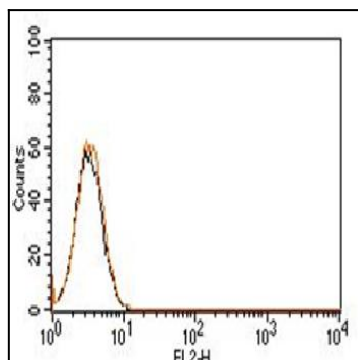


Figure-1: Cell surface flow analysis of PE conjugated Rabbit IgG Isotype control in Jurkat Cell line using 5  $\mu\text{l}/10^6$  cells. Black represent cell alone, red represent Rabbit IgG Isotype control conjugated with PE (Cat No.-11-201-PE).

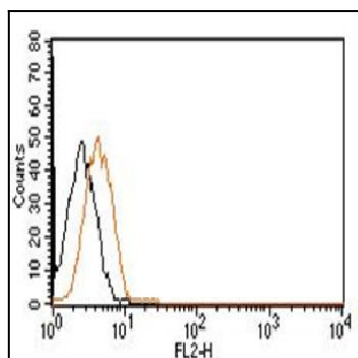


Figure-2: Cell surface flow analysis of PE conjugated Rabbit IgG Isotype control in MCF-7 Cell line using 5  $\mu\text{l}/10^6$  cells. Black represent cell alone, red represent Rabbit IgG Isotype control conjugated with PE (Cat No.-11-201-PE).

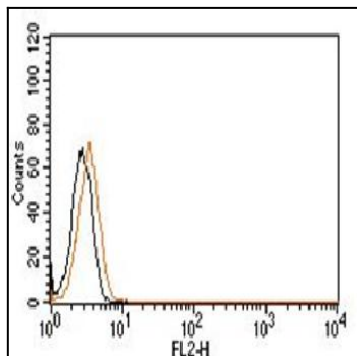


Figure-3: Cell surface flow analysis of PE conjugated Rabbit IgG Isotype control in EL-4 Cell line using 5  $\mu\text{l}/10^6$  cells. Black represent cell alone, red represent Rabbit IgG Isotype control conjugated with PE (Cat No.-11-201-PE).

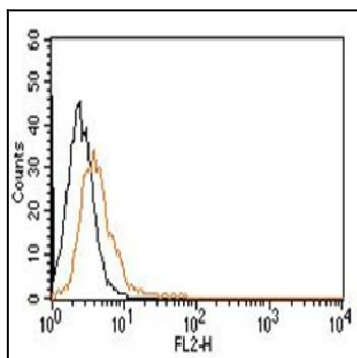


Figure-4: Cell surface flow analysis of PE conjugated Rabbit IgG Isotype control in 3T3 Cell line using 5  $\mu\text{l}/10^6$  cells. Black represent cell alone, red represent Rabbit IgG Isotype control conjugated with PE (Cat No.-11-201-PE).