

## 12-1005: Recombinant Mouse Monoclonal Antibody to Cytokeratin 7 (Glandular and Transitional Epithelial Marker)(Clone : rOV-TL12/30)

<b>Clonality :</b>	Monoclonal
<b>Clone Name :</b>	rOV-TL12/30
<b>Application :</b>	WB,FACS,IHC
<b>Reactivity :</b>	Human
<b>Gene :</b>	KRT7
<b>Gene ID :</b>	3855
<b>Uniprot ID :</b>	P08729
<b>Format :</b>	Purified
<b>Alternative Name :</b>	CK-7, K2C7, Keratin 55K Type II Cytoskeletal, Keratin Simple Epithelial Type 1 K7, Keratin Type II Cytoskeletal 7, Krt2-7, KRT7, Sarcolectin, SCL, Type II Mesothelial Keratin K7, Type-II Keratin Kb7
<b>Isotype :</b>	Mouse IgG1, kappa
<b>Immunogen Information :</b>	OTN 11, ovarian carcinoma cell line

### Description

It recognizes an intermediate filament protein (IFP) of 55kDa, which is identified as cytokeratin 7. This MAb is highly specific to cytokeratin 7 and shows no cross-reaction with other IFPs. Cytokeratin 7 is a basic cytokeratin, which is found in most glandular and transitional epithelia but not in the stratified squamous epithelia. Keratin 7 is expressed in the epithelial cells of ovary, lung, and breast but not of colon, prostate, or gastrointestinal tract. This MAb is highly useful in distinguishing ovarian carcinomas (keratin 7+) from colon carcinomas (keratin 7-).

### Product Info

<b>Amount :</b>	20 µg / 100 µg
<b>Purification :</b>	Purified Ab with BSA and Azide at 200ug/ml
<b>Content :</b>	200ug/ml of recombinant MAb purified by Protein A/G. Prepared in 10mM PBS with 0.05% BSA & 0.05% azide. Also available WITHOUT BSA & azide at 1.0mg/ml.
<b>Storage condition :</b>	Store the antibody at 4°C; stable for 6 months. For long-term storage; store at -20°C. Avoid repeated freeze and thaw cycles.

### Application Note

Western Blot (1-2Âµg/ml); Flow Cytometry (1-2Âµg/million cells); Immunohistochemistry (Formalin-fixed) (1-2Âµg/ml for 30 minutes at RT)(Staining of formalin-fixed tissues requires heating tissue sections in 10mM Tris with 1mM EDTA, pH 9.0, for 45 min at 95&degC followed by cooling at RT for 20 minutes)

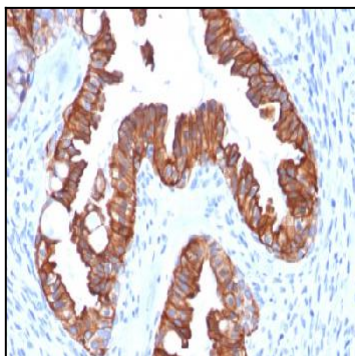


Figure 1: Formalin-fixed, paraffin-embedded human Endometrial Carcinoma stained with Cytokeratin-7 Mouse Recombinant Monoclonal Antibody (rOV-TL12/30).

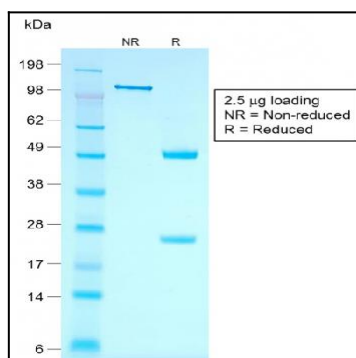


Figure 2: SDS-PAGE Analysis Purified Cytokeratin-7 Mouse Recombinant Monoclonal Antibody (rOV-TL12/30).