

12-1010: Recombinant Mouse Monoclonal Antibody to ACTH (Adrenocorticotrophic Hormone) (N-Terminal) (Pituitary Marker)(Clone : r57)

| | |
|--------------------------------|---|
| Clonality : | Monoclonal |
| Clone Name : | r57 |
| Application : | ELISA,IHC |
| Reactivity : | Human, Mouse |
| Gene : | POMC |
| Gene ID : | 5443 |
| Uniprot ID : | P01189 |
| Format : | Purified |
| Alternative Name : | Adrenocorticotropin, alpha or beta or gamma Melanocyte Stimulating Hormone (MSH) or Melanotropin, beta-Endorphin, beta or gamma Lipotropin (LPH), CLIP, Met Enkephalin, POC, POMC |
| Isotype : | Mouse IgG1, kappa |
| Immunogen Information : | N-terminal fragment of human ACTH conjugated to KLH |

Description

ACTH (same as Corticotropin) is a 39 amino acid active peptide produced by the anterior pituitary. This MAb is specific to Synacthen (aa1-24 of ACTH); does not react with CLIP (aa17-39 of ACTH). POMC (pro-opiomelanocortin or corticotropin-lipotropin) is a 267 amino acid polypeptide hormone precursor that goes through extensive, tissue-specific posttranslational processing by convertases. POMC is cleaved into ten hormone chains named NPP, ACTH, alpha-MSH (Melanocyte Stimulating Hormone), beta-MSH, gamma-MSH, CLIP (corticotropin-like intermediary peptide), Lipotropin-beta, Lipotropin-gamma, beta-endorphin and Met-enkephalin. ACTH is also produced by cells of immune system (T-cells, B-cells, and macrophages) in response to stimuli associated with stress. Anti-ACTH is a useful marker in classification of pituitary tumors and the study of pituitary disease. It reacts with ACTH-producing cells (corticotrophs). It also may react with other tumors (e.g. some small cell carcinomas of the lung) causing paraneoplastic syndromes by secreting ACTH.

Product Info

| | |
|----------------------------|---|
| Amount : | 20 µg / 100 µg |
| Purification : | Purified Ab with BSA and Azide at 200ug/ml |
| Content : | 200ug/ml of recombinant MAb purified by Protein A/G. Prepared in 10mM PBS with 0.05% BSA & 0.05% azide. Also available WITHOUT BSA & azide at 1.0mg/ml. |
| Storage condition : | Store the antibody at 4°C; stable for 6 months. For long-term storage; store at -20°C. Avoid repeated freeze and thaw cycles. |

Application Note

ELISA (For coating, order Ab without BSA); ,Immunohistochemistry (Formalin-fixed) (1-2µg/ml for 30 minutes at RT),(Staining of formalin-fixed tissues requires heating tissue sections in 10mM Tris with 1mM EDTA, pH 9.0, for 45 min at 95 °C followed by cooling at RT for 20 minutes),

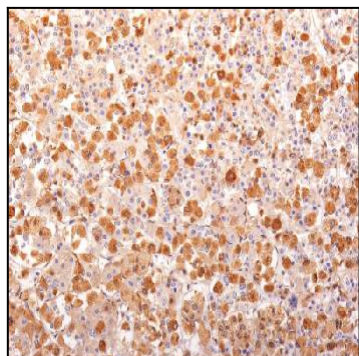


Figure 1: Formalin-fixed, paraffin-embedded human Pituitary Gland stained with ACTH Mouse Recombinant Monoclonal Antibody (r57).

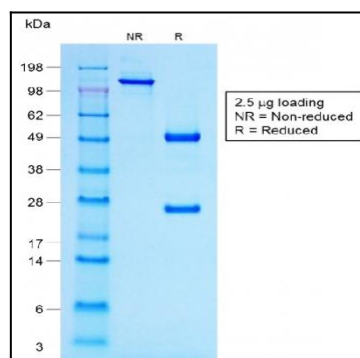


Figure 2: SDS-PAGE Analysis of Purified ACTH Mouse Recombinant Monoclonal Antibody (r57).