

12-1020: Recombinant Rabbit Monoclonal Antibody to MART-1 / Melan-A / MLANA (Melanoma Marker)(Clone : MLANA/1761R)

Clonality :	Monoclonal
Clone Name :	MLANA/1761R
Application :	WB,IHC
Reactivity :	Human, Mouse, Rat
Gene :	MLANA
Gene ID :	2315
Uniprot ID :	Q16655
Format :	Purified
Alternative Name :	Antigen LB39-AA, Antigen SK29-AA, Melanoma antigen recognized by T-cells 1, MLAN-A, MLANA
Isotype :	Rabbit IgG
Immunogen Information :	Recombinant human full-length MLANA protein

Description

This antibody recognizes a protein doublet of 20-22kDa, identified as MART-1 (Melanoma Antigen Recognized by T cells 1) or Melan-A. MART-1 is a newly identified melanocyte differentiation antigen recognized by autologous cytotoxic T lymphocytes. Seven other melanoma associated antigens recognized by autologous cytotoxic T cells include MAGE-1, MAGE-3, tyrosinase, gp100, gp75, BAGE-1, and GAGE-1. Subcellular fractionation shows that MART-1 is present in melanosomes and endoplasmic reticulum. This MAb labels melanomas and other tumors showing melanocytic differentiation. It is also a useful positive-marker for angiomylipomas. It does not stain tumor cells of epithelial, lymphoid, glial, or mesenchymal origin.

Product Info

Amount :	20 µg / 100 µg
Purification :	Purified Ab with BSA and Azide at 200ug/ml
Content :	200ug/ml of Ab purified by Protein A. Prepared in 10mM PBS with 0.05% BSA & 0.05% azide. Also available WITHOUT BSA & azide at 1.0mg/ml.
Storage condition :	Store the antibody at 4°C; stable for 6 months. For long-term storage; store at -20°C. Avoid repeated freeze and thaw cycles.

Application Note

Western Blot (1-2Âµg/ml); Immunohistochemistry (Formalin-fixed) (1-2Âµg/ml for 30 minutes at RT)(Staining of formalin-fixed tissues requires heating tissue sections in 10mM Tris with 1mM EDTA, pH 9.0, for 45 min at 95°C followed by cooling at RT for 20 minutes)

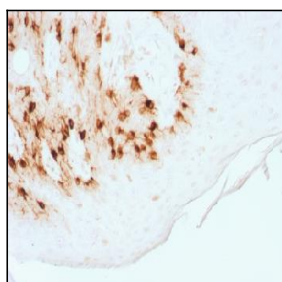


Figure 1: Formalin-fixed, paraffin-embedded Human Skin stained with MART-1 Rabbit Recombinant Monoclonal Antibody (MLANA/1761R) (HRP-DAB).

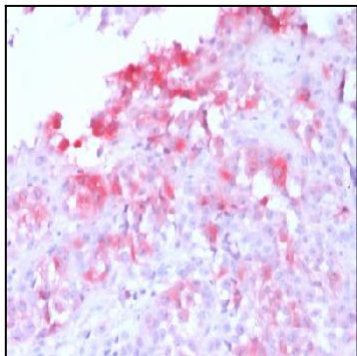


Figure 2: Formalin-fixed, paraffin-embedded Human Melanoma stained with MART-1 Rabbit Recombinant Monoclonal Antibody (MLANA/1761R) (AP-Fast Red).

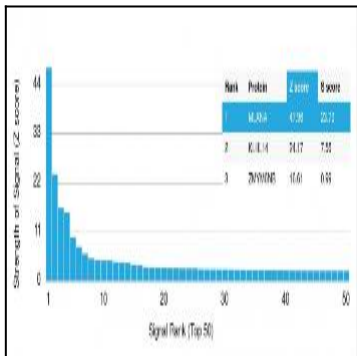


Figure 3: SDS-PAGE Analysis of Purified MART-1 Rabbit Recombinant Monoclonal Antibody (MLANA/1761R).