

## 12-1022: Recombinant Rabbit Monoclonal Antibody to CD15 / FUT4 (Reed-Sternberg Cell Marker)(Clone : FUT4/1478R)

|                                |   |
|--------------------------------|---|
| <b>Clonality :</b>             | Monoclonal  |
| <b>Clone Name :</b>            | FUT4/1478R  |
| <b>Application :</b>           | FACS,IF,IHC   |
| <b>Reactivity :</b>            | Human, Mouse, Rat   |
| <b>Gene :</b>                  | FUT4  |
| <b>Gene ID :</b>               | 2526  |
| <b>Uniprot ID :</b>            | P22083  |
| <b>Format :</b>                | Purified  |
| <b>Alternative Name :</b>      | 3 Fucosyl N Acetyl Lactosamine, Alpha (1,3) Fucosyltransferase, Alpha 13 fucosyltransferase FucT, ELAM Ligand Fucosyltransferase, ELFT, FCT3A, Fuc-TIV, Fucosyltransferase 4 Alpha 1 3 Fucosyltransferase Myeloid Specific, Fucosyltransferase 4, Galactoside 3 L Fucosyltransferase, Lewis X, LeX, SSEA1, Stage Specific Embryonic Antigen 1 |
| <b>Isotype :</b>               | Rabbit IgG  |
| <b>Immunogen Information :</b> | Purified human neutrophils  |

### Description

CD15 plays a role in mediating phagocytosis, bactericidal activity, and chemotaxis. It is present on >95% of granulocytes including neutrophils and eosinophils and to a lesser degree on monocytes. In addition, CD15 is expressed in Reed-Sternberg cells and some epithelial cells. CD15 antibody is very useful in the identification of Hodgkin s disease. CD15 is occasionally expressed in large cell lymphomas of both B and T phenotypes which otherwise have a quite distinct histological appearance.

### Product Info

|                            |   |
|----------------------------|---|
| <b>Amount :</b>            | 20 µg / 100 µg  |
| <b>Purification :</b>      | Purified Ab with BSA and Azide at 200ug/ml  |
| <b>Content :</b>           | 200ug/ml of Ab purified by Protein A Column. Prepared in 10mM PBS with 0.05% BSA & 0.05% azide. Also available WITHOUT BSA & Azide at 1.0mg/ml. |
| <b>Storage condition :</b> | Store the antibody at 4°C; stable for 6 months. For long-term storage; store at -20°C. Avoid repeated freeze and thaw cycles.                   |

### Application Note

Flow Cytometry (1-2 $\times 10^5$ µg/million cells); Immunofluorescence (1-2 $\times 10^5$ µg/ml); Immunohistochemistry (Formalin-fixed) (1-2 $\times 10^5$ µg/ml for 30 minutes at RT)(Staining of formalin-fixed tissues requires heating tissue sections in 1mM EDTA, pH 8.0, for 45 min at 95&degC followed by cooling at RT for 20 minutes)

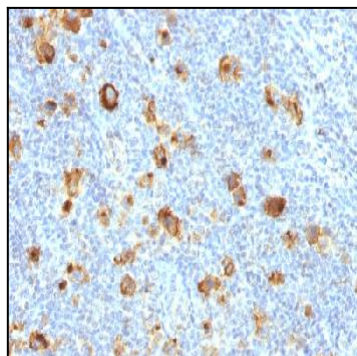


Figure 1: Formalin-fixed, paraffin-embedded human Hodgkin's Lymphoma stained with CD15 Rabbit Recombinant Monoclonal Antibody (FUT4/1478R).

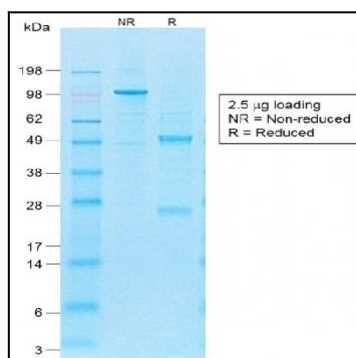


Figure 2: SDS-PAGE Analysis of Purified CD15 Rabbit Recombinant Monoclonal Antibody (FUT4/1478R).